



SUPREME MODULAR

Vacation Homes

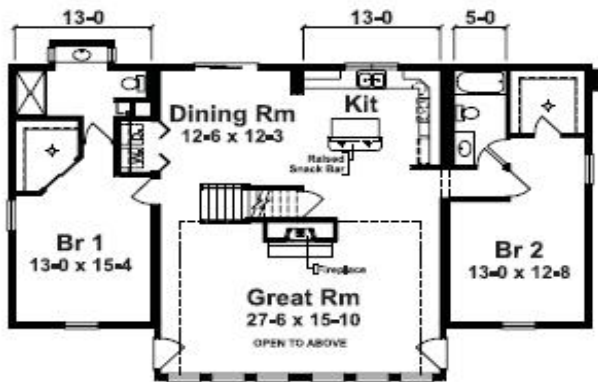


Supreme Modular Homes Vacation Homes

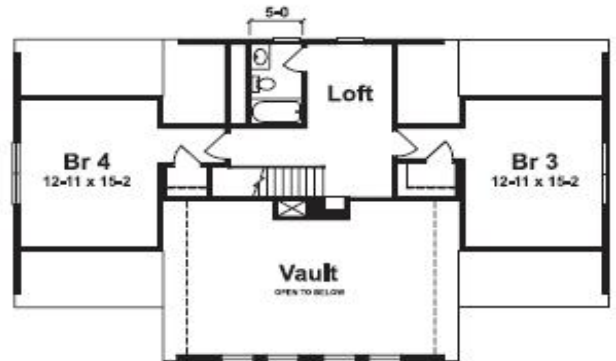
SUPREME MODULAR



WINTERPARK RENDERING



1ST FLOOR 33'-0" x 55'-0" 2397 Sq. Ft.



2ND FLOOR

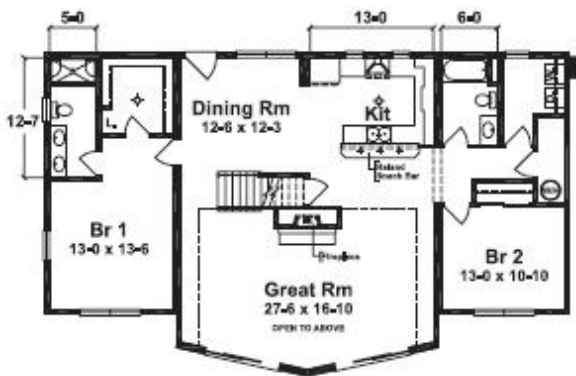
THE WINTERPARK

The Winterpark is truly a great home for both lakeside or mountain retreat lifestyles. This home provides 2 stories of living space along with Great Room feature wall of windows that can provide spectacular views. The great room windows are standard along with full glass doors that exit each side of the Great Room. The exterior is highlighted by optional log siding and elongated first floor windows with grills. The metal roof, chimney box with stone accent and deck are site provided and installed.

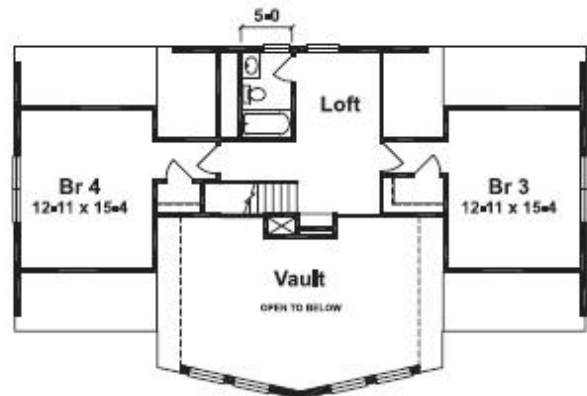
SUPREME MODULAR



CASCADE RENDERING



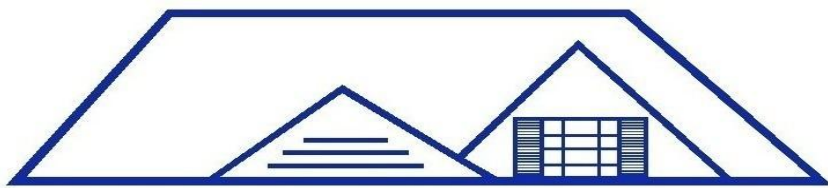
1ST FLOOR 34'-0" x 55'-0" 1685 Sq. Ft.



SUGGESTED 2ND FLOOR 711 Sq. Ft.

THE CASCADE

This open floor plan, as shown, is standard with dual railing at stairs on the first floor, fireplace with 2 Story chimney box and decorative rangehood as a kitchen backdrop. The plan also includes 8' patio doors at the Great Room. The exterior is highlighted by prow walls and large trapezoid windows that light up the Great Room vault. Optional features include window and patio door grills, plank style shutters and horizontal siding. The chimney with stone is site provided and installed.



SUPREME MODULAR

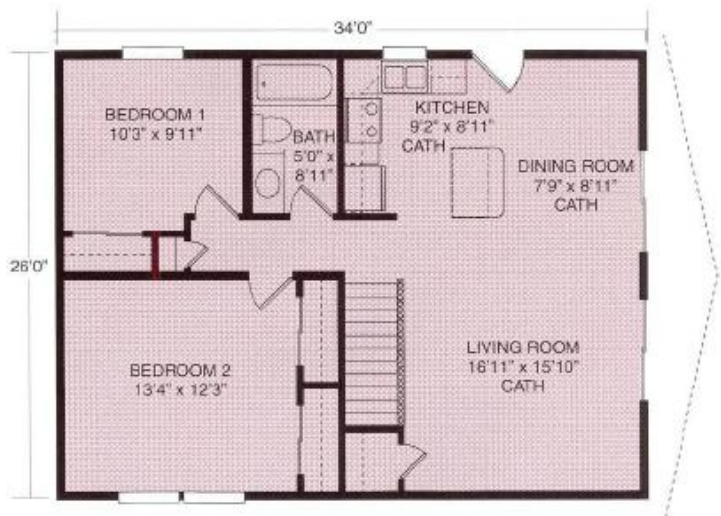


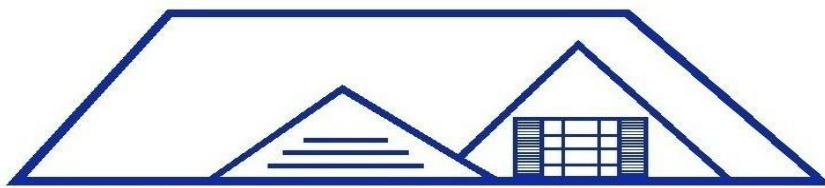
LAREDO RENDERING

The Skyview

Plan No. 226 ♦ 884 SQ. FT.

Easy living with large master bedroom with double closets, additional bedroom and full bath. Cathedral ceilings adorn the living room, dining room, and kitchen.



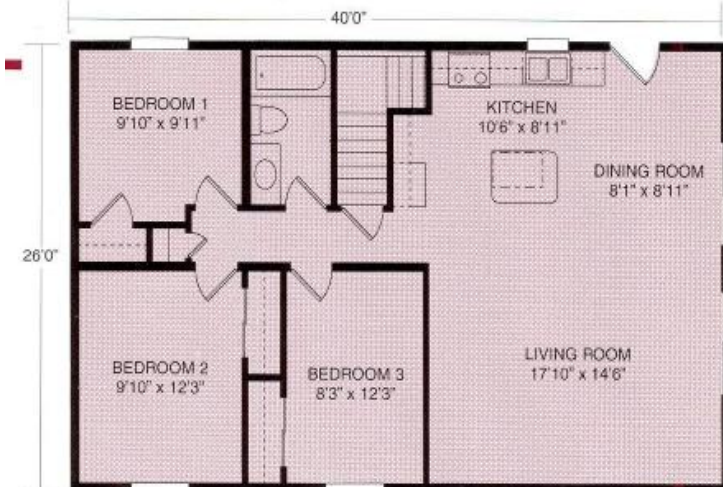


SUPREME MODULAR



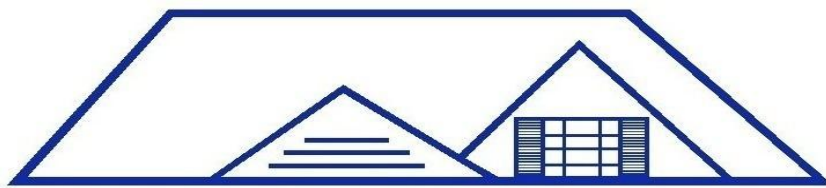
The Mountainview

Plan No. 227 ♦ 1040 SQ. FT.
This plan is perfect for families on the go including three bedrooms, full bath, kitchen with snack bar and the open living room and dining room.

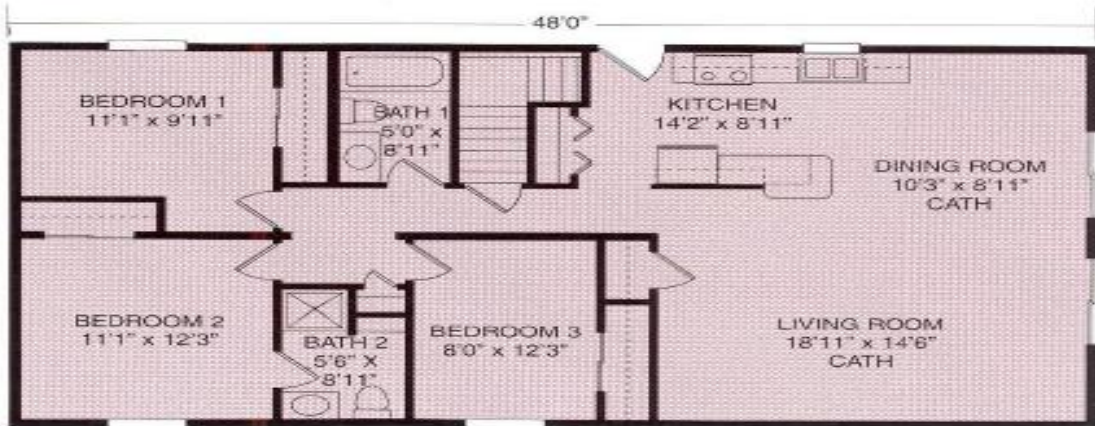


The Valleyview

Plan No. 204 ♦ 1040 SQ. FT.
Spacious living room, open dining room, cathedral ceilings, three bedrooms and a full bath makes this home perfect for families who enjoy open living.



SUPREME MODULAR

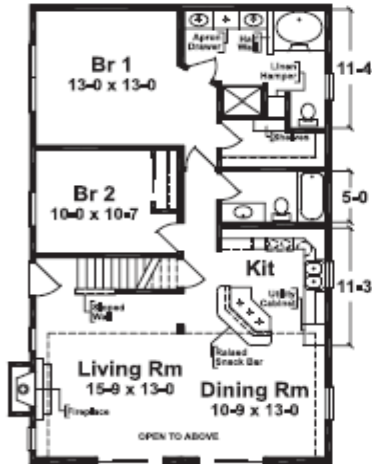


The Longview

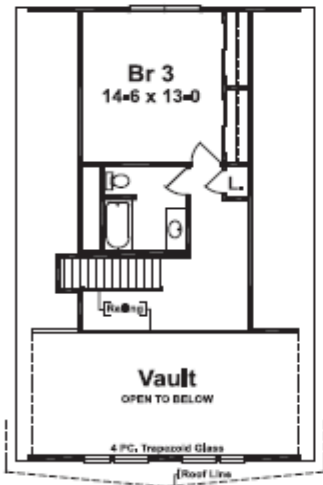
Plan No. 212 ♦ 1248 SQ. FT.

All the space you need for an escape to privacy with three spacious bedrooms, three-quarter bath and a full bath. Also wide open living room, dining room and kitchen with snack bar makes this plan a favorite.

SUPREME MODULAR



1ST FLOOR 27'-6" x 44'-0" 1210 Sq. Ft.



SUGGESTED 2ND FLOOR 511 Sq. Ft.

THE OZARK C

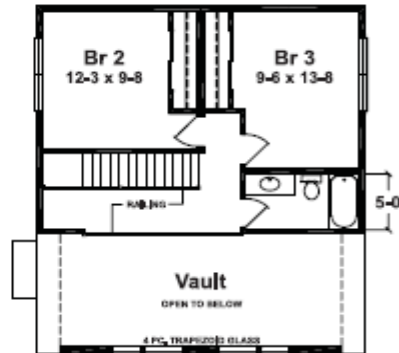
As shown, standard features include front gable prow overhangs, trapezoid windows in the vaulted area of the living room and dining rooms along with a fireplace. The kitchen includes a raised snack bar for casual seating. Note: The standard fireplace as shown is site installed.



LAKEVIEW RENDERING



1ST FLOOR 27'-6" x 30'-6" 1392 Sq. Ft.



2ND FLOOR

THE LAKEVIEW

Lakeview standards include trapezoid windows in the vaulted area (2) 6' patio doors and fireplace. The elevation as shown features optional vertical siding and site installed stone on the chimney. Note: The fireplace as shown is site installed, additionally there are no length extensions allowed on the Lakeview

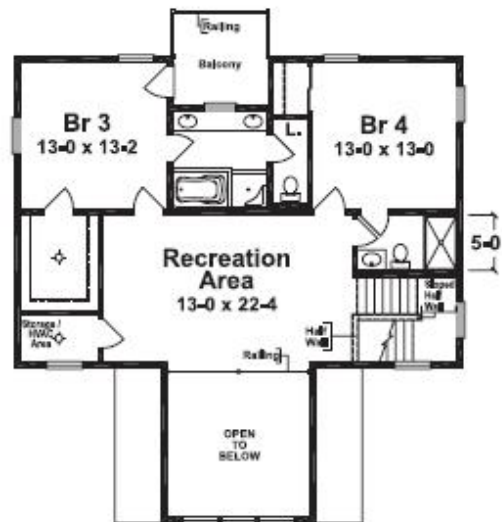
SUPREME MODULAR



ASPEN RENDERING



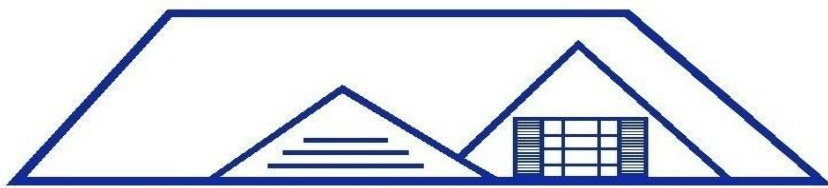
1ST FLOOR 40'-0" x 41'-3" 2511 Sq. Ft.



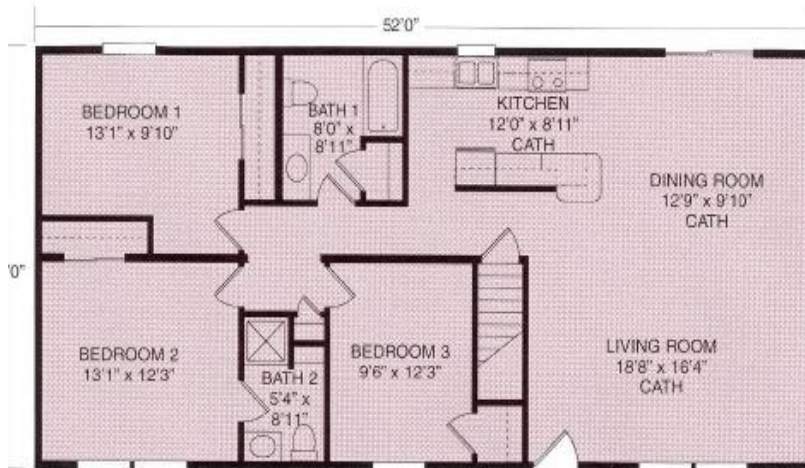
2ND FLOOR

THE ASPEN

The Aspen home is truly a second home or vacation destination. This floor plan provides expansive common space on both the first and second floors. The great Room is highlighted by a casement window wall with a vaulted dormer above. This provides tremendous natural light and views from both the Great Room and the second floor Recreation Area. Other compliments of this home include (4) full baths and a private balcony area for the second floor suite. The exterior features include optional elongated windows, window grills, and log siding. The deck, metal roof and stone work are site provided and installed.



SUPREME MODULAR



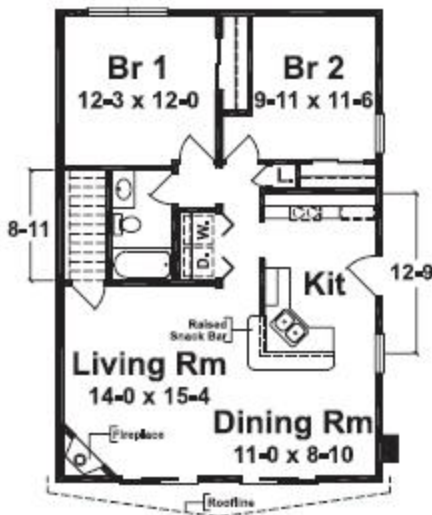
The Lakeside

Plan No. 228 ♦ 1352 SQ. FT.
Cathedral ceilings enhance the tremendous space offered by open, airy living room, dining room, and kitchen area. Master bedroom suite with adjoining bath, two additional bedrooms and a three-quarter bath.

SUPREME MODULAR

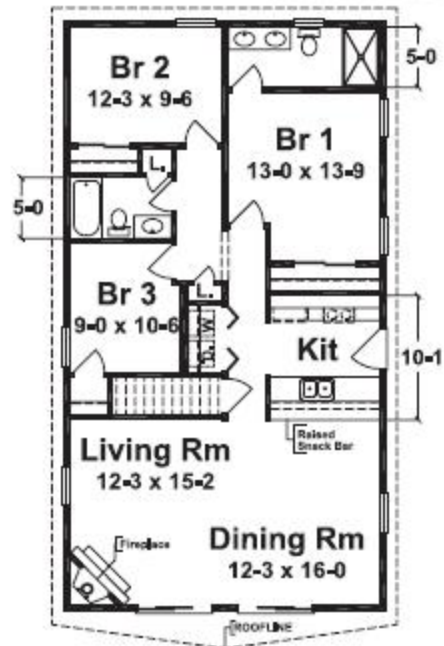


CEDARVIEW RENDERING



26'-0" x 38'-0" 988 Sq. Ft.

THE CEDARVIEW A



26'-0" x 48'-0" 1248 Sq. Ft.

THE CEDARVIEW B

Standard features include a Gable Prow at the Living Room and Dining Room entry. Along with two (2) 6' patio doors and a fireplace. Flat 8' ceilings are standard throughout. The elevation, as shown, features an extended porch and deck provided by the builder at site. Additionally,