

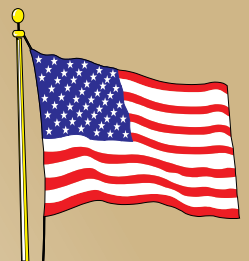


Building **AMERICA'S** Future... Today!



Supreme Modular
3040 White Horse Pike
Hammonton, NJ 08037

Two-Story

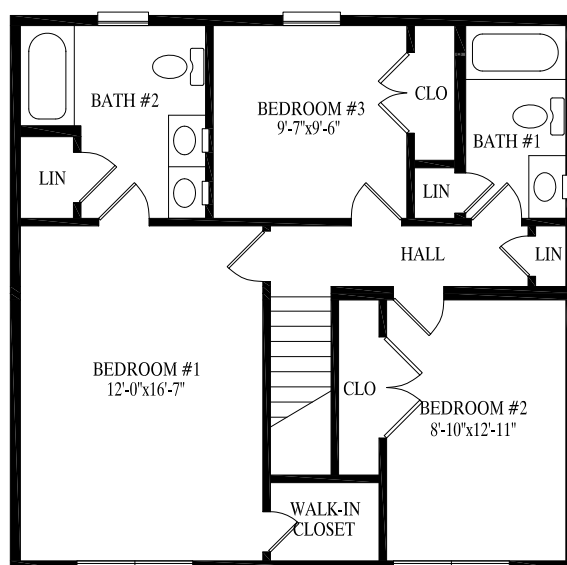
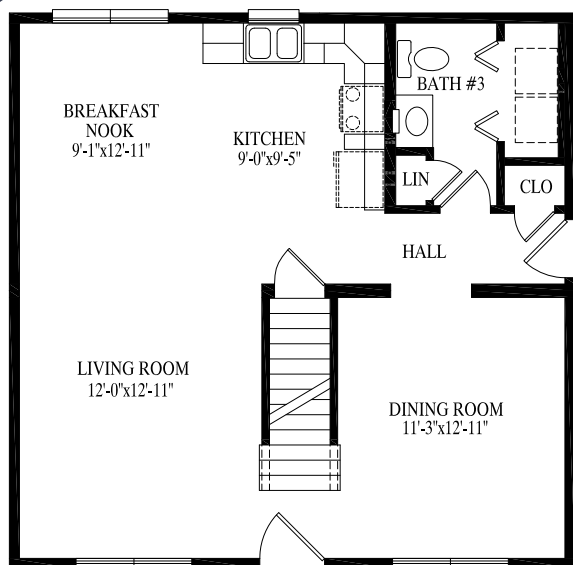


Made in USA

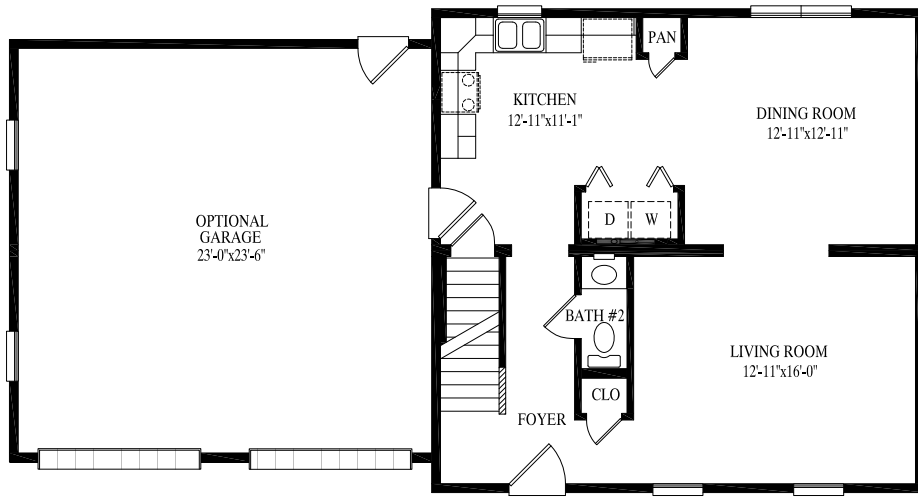
SM-1265



Any/all options/upgrades shown on plans, including and without limitation to appliances, bookcases, additional shelving, basement stairs, decks, porches, dormers, interior upgrades, flooring, tile work, bath upgrades, door/window upgrades, exterior upgrades, etc, are not included in price. All plans subject to engineering review and changes may be required to be made per engineering. SM-1265



27' 6" x 28'
770 sq. ft. 1st floor
27' 6" x 28'
770 sq. ft. 2nd floor
1540 total sq. ft.

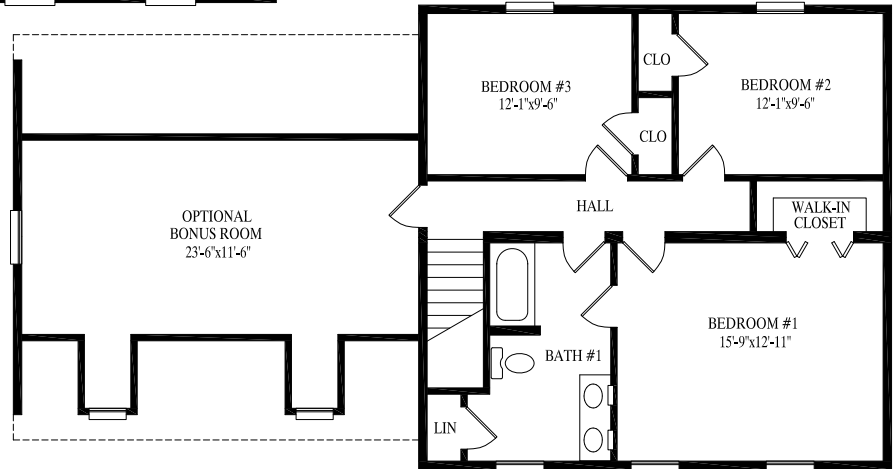


27' 6" x 28'
770 sq. ft. 1st floor

27' 6" x 28'
770 sq. ft. 2nd floor

1540 total sq. ft.

Any/all options/upgrades shown on plans, including and without limitation to appliances, bookcases, additional shelving, basement stairs, decks, porches, dormers, interior upgrades, flooring, tile work, bath upgrades, door/window upgrades, exterior upgrades, etc, are not included in price. All plans subject to engineering review and changes may be required to be made per engineering. SM-1264



SM-1264

SM-1266

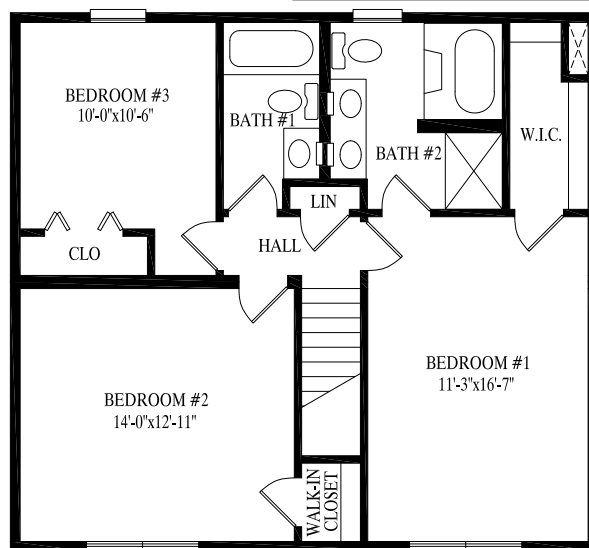
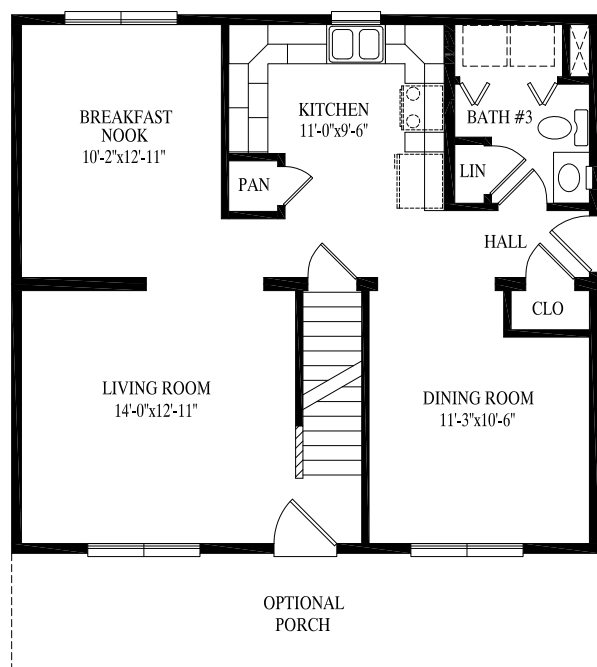


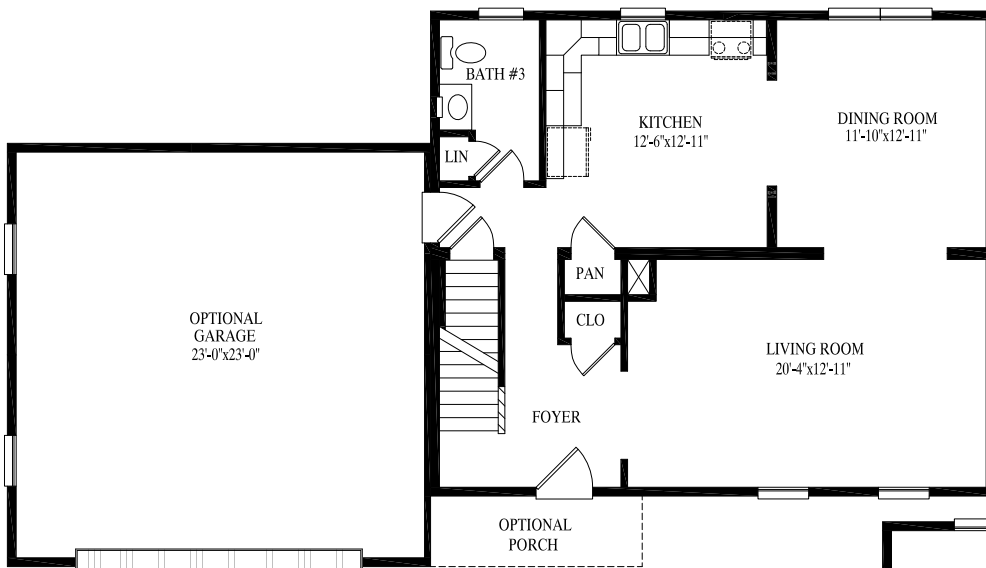
Any/all options/upgrades shown on plans, including and without limitation to appliances, bookcases, additional shelving, basement stairs, decks, porches, dormers, interior upgrades, flooring, tile work, bath upgrades, door/window upgrades, exterior upgrades, etc, are not included in price. All plans subject to engineering review and changes may be required to be made per engineering.

SM-1266

27' 6" x 30'
825 sq. ft. 1st floor

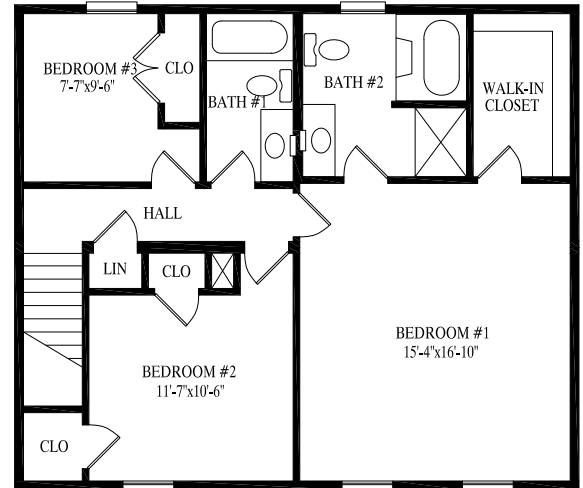
27' 6" x 30'
825 sq. ft. 2nd floor
1650 total sq. ft.





27' 6" x 32'
880 sq. ft. 1st floor
27' 6" x 32'
880 sq. ft. 2nd floor
1760 total sq. ft.

Any/all options/upgrades shown on plans, including and without limitation to appliances, bookcases, additional shelving, basement stairs, decks, porches, dormers, interior upgrades, flooring, tile work, bath upgrades, door/window upgrades, exterior upgrades, etc, are not included in price. All plans subject to engineering review and changes may be required to be made per engineering.
SM-1297



SM-1297

SM-1269

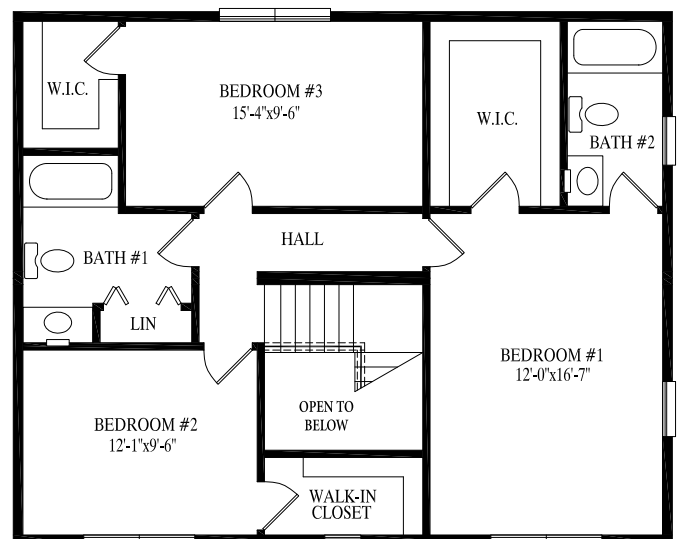
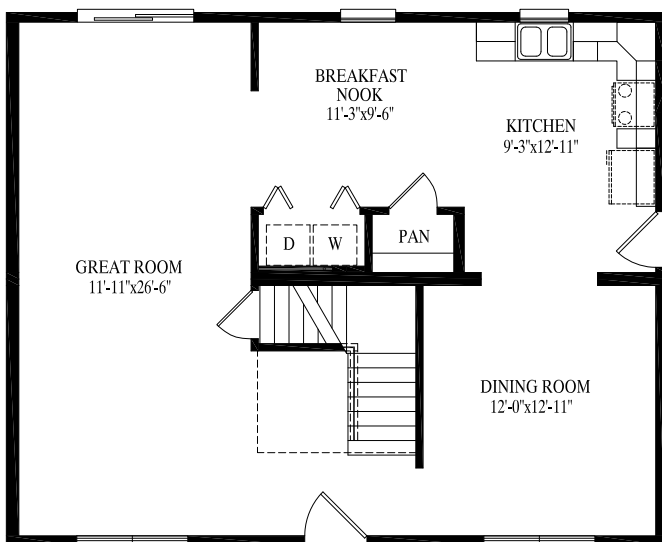


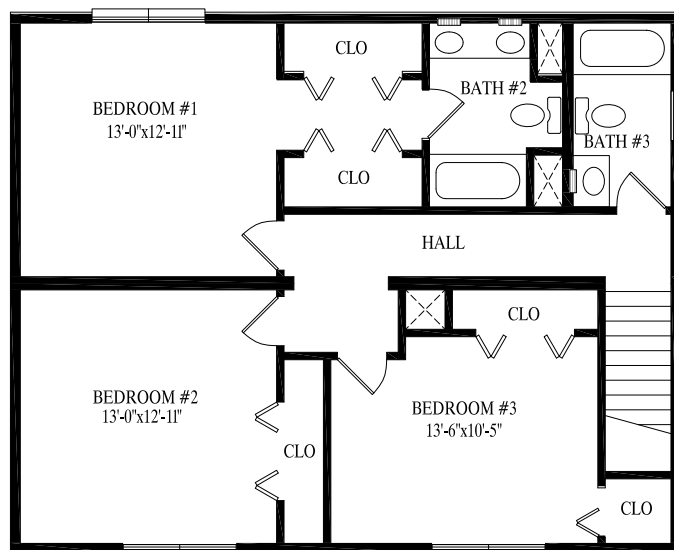
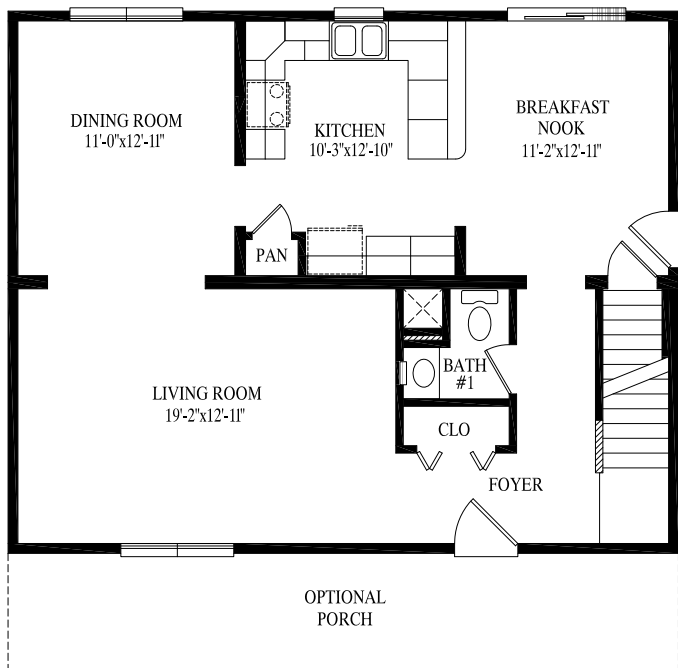
Any/all options/upgrades shown on plans, including and without limitation to appliances, bookcases, additional shelving, basement stairs, decks, porches, dormers, interior upgrades, flooring, tile work, bath upgrades, door/window upgrades, exterior upgrades, etc, are not included in price. All plans subject to engineering review and changes may be required to be made per engineering. SM-1269

27' 6" x 34'
935 sq. ft. 1st floor

27' 6" x 34'
935 sq. ft. 2nd floor

1870 total sq. ft.





27' 6" x 34'
 935 sq. ft. 1st floor
 27' 6" x 34'
 935 sq. ft. 2nd floor
 1870 total sq. ft.

Any/all options/upgrades shown on plans, including and without limitation to appliances, bookcases, additional shelving, basement stairs, decks, porches, dormers, interior upgrades, flooring, tile work, bath upgrades, door/window upgrades, exterior upgrades, etc, are not included in price. All plans subject to engineering review and changes may be required to be made per engineering. SM-1270

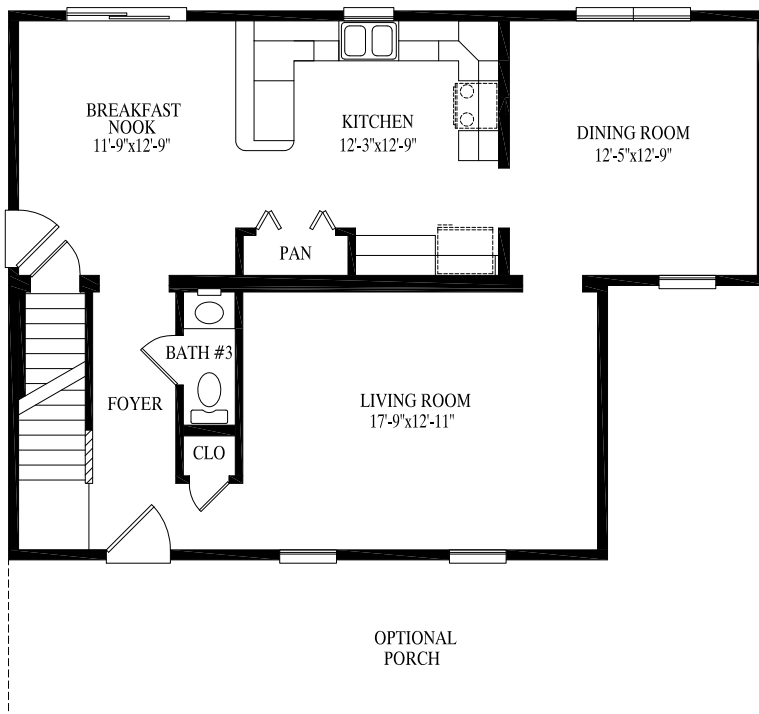


SM-1270

SM-1271



Any/all options/upgrades shown on plans, including and without limitation to appliances, bookcases, additional shelving, basement stairs, decks, porches, dormers, interior upgrades, flooring, tile work, bath upgrades, door/window upgrades, exterior upgrades, etc, are not included in price. All plans subject to engineering review and changes may be required to be made per engineering. SM-1271



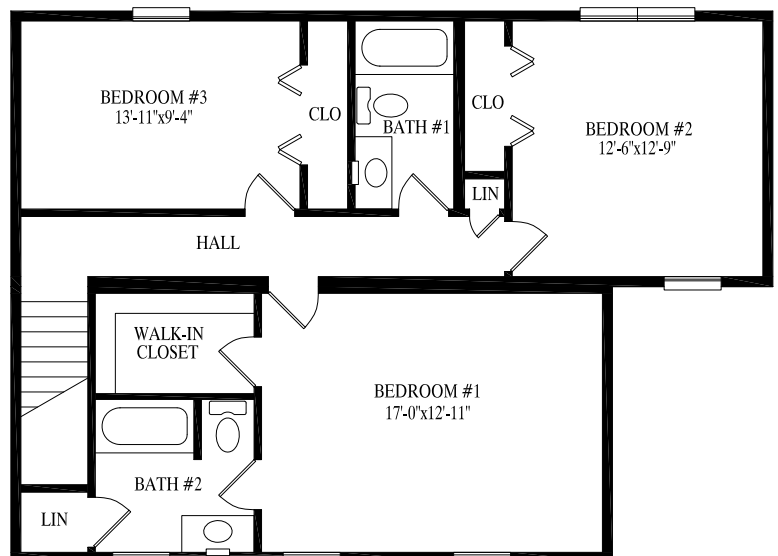
27' 6" x 30' 38"

935 sq. ft. 1st floor

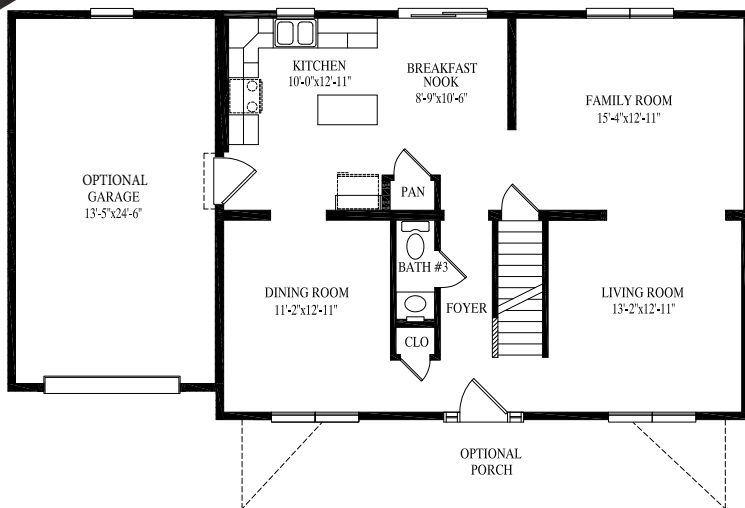
27' 6" x 30' 38"

935 sq. ft. 2nd floor

1870 total sq. ft.



SM-1303 w/ optional garage & 4th bedroom



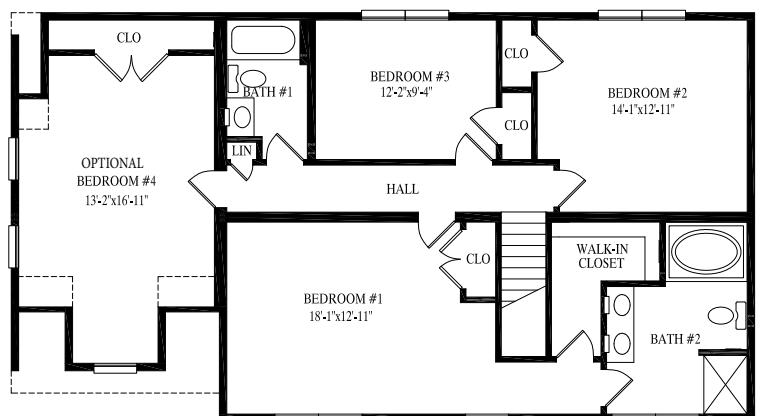
27' 6" x 36'
990 sq. ft. 1st floor

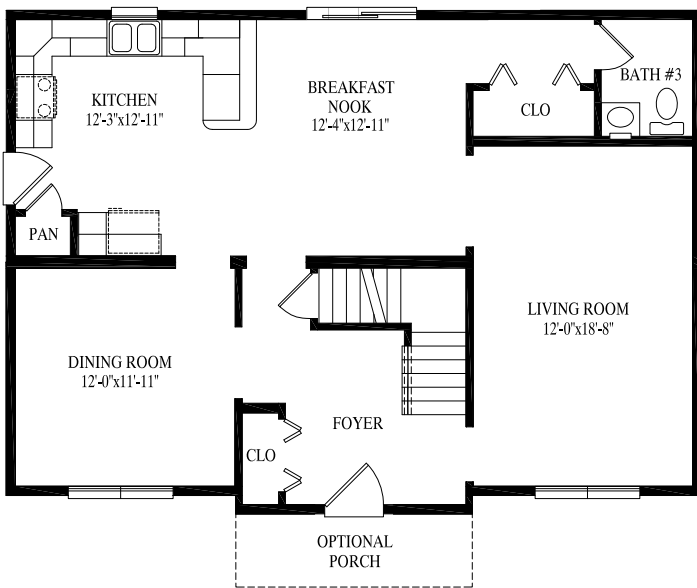
27' 6" x 36'
990 sq. ft. 2nd floor

1980 total sq. ft.

2280 total sq. ft.
with optional garage
and 4th bedroom

Any/all options/upgrades shown on plans, including and without limitation to appliances, bookcases, additional shelving, basement stairs, decks, porches, dormers, interior upgrades, flooring, tile work, bath upgrades, door/window upgrades, exterior upgrades, etc, are not included in price. All plans subject to engineering review and changes may be required to be made per engineering. SM-1303

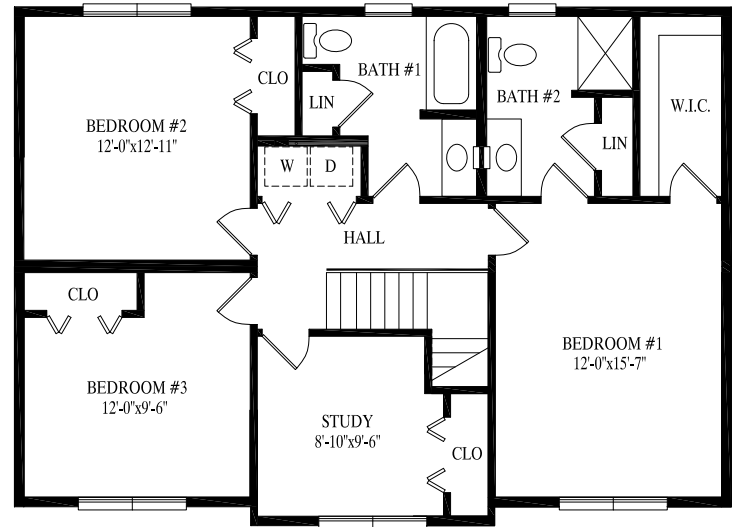




27' 6" x 38'
1020 sq. ft. 1st floor

27' 6" x 38'
1020 sq. ft. 2nd floor

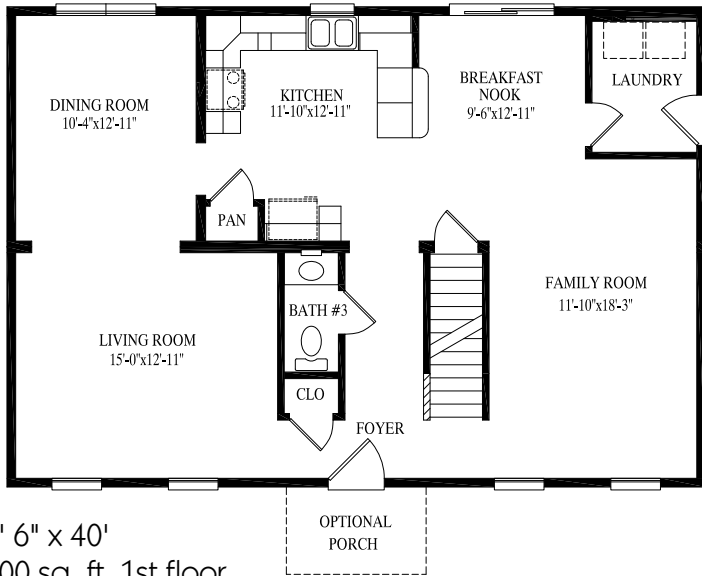
2040 total sq. ft.



Any/all options/upgrades shown on plans, including and without limitation to appliances, bookcases, additional shelving, basement stairs, decks, porches, dormers, interior upgrades, flooring, tile work, bath upgrades, door/window upgrades, exterior upgrades, etc, are not included in price. All plans subject to engineering review and changes may be required to be made per engineering. SM-1286



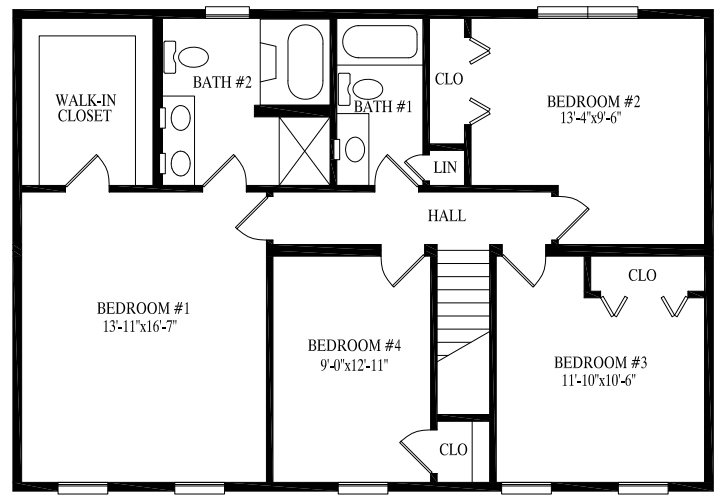
SM-1286



27' 6" x 40'
1100 sq. ft. 1st floor

27' 6" x 40'
1100 sq. ft. 2nd floor

2200 total sq. ft.

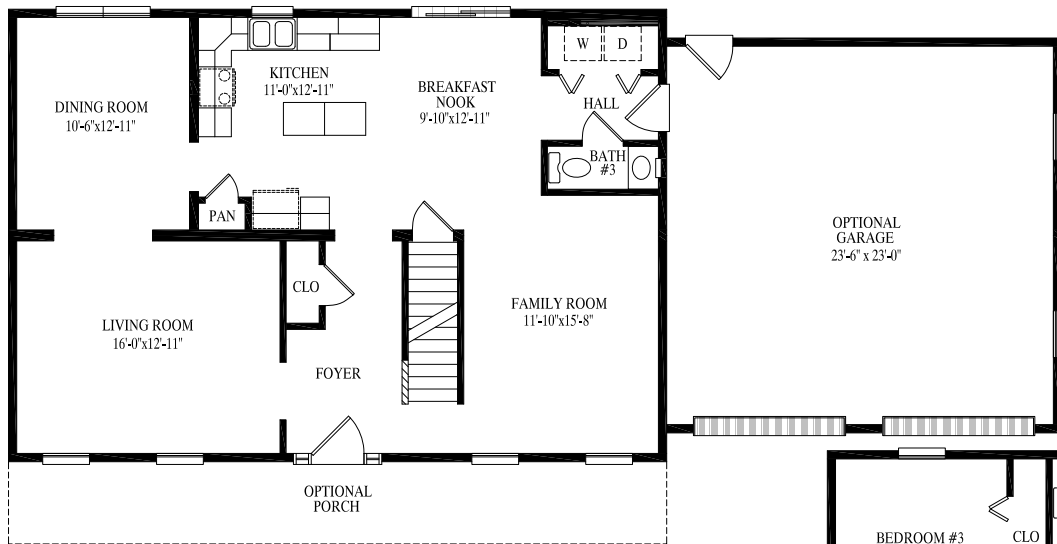


Any/all options/upgrades shown on plans, including and without limitation to appliances, bookcases, additional shelving, basement stairs, decks, porches, dormers, interior upgrades, flooring, tile work, bath upgrades, door/window upgrades, exterior upgrades, etc, are not included in price. All plans subject to engineering review and changes may be required to be made per engineering. SM-1288



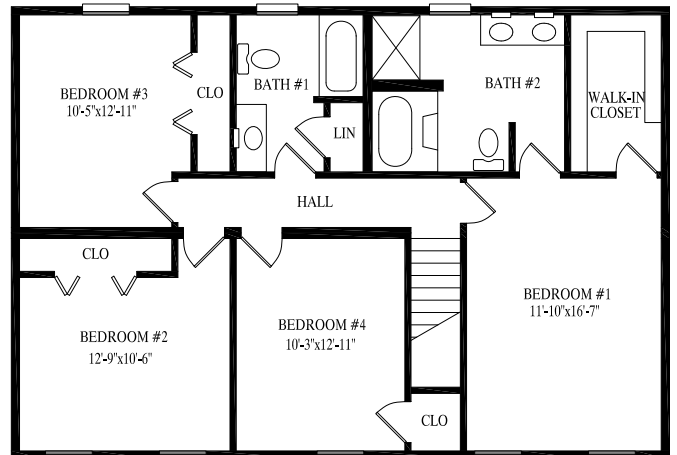
SM-1288

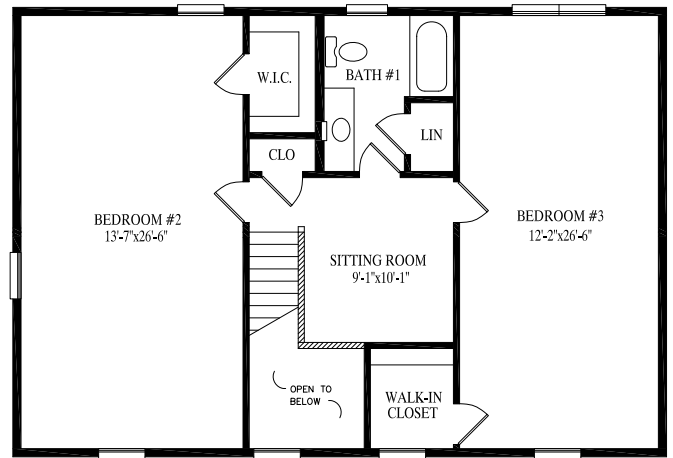
SM-1290



27' 6" x 40'
1100 sq. ft. 1st floor
27' 6" x 40'
1100 sq. ft. 2nd floor
2200 total sq. ft.

Any/all options/upgrades shown on plans, including and without limitation to appliances, bookcases, additional shelving, basement stairs, decks, porches, dormers, interior upgrades, flooring, tile work, bath upgrades, door/window upgrades, exterior upgrades, etc, are not included in price. All plans subject to engineering review and changes may be required to be made per engineering. SM-1290



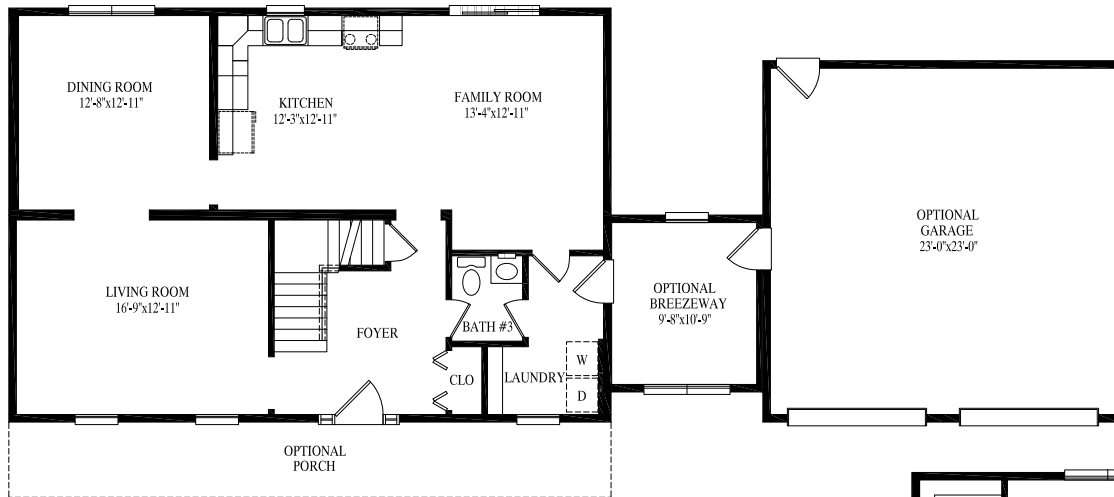


Any/all options/upgrades shown on plans, including and without limitation to appliances, bookcases, additional shelving, basement stairs, decks, porches, dormers, interior upgrades, flooring, tile work, bath upgrades, door/window upgrades, exterior upgrades, etc, are not included in price. All plans subject to engineering review and changes may be required to be made per engineering. SM-1309

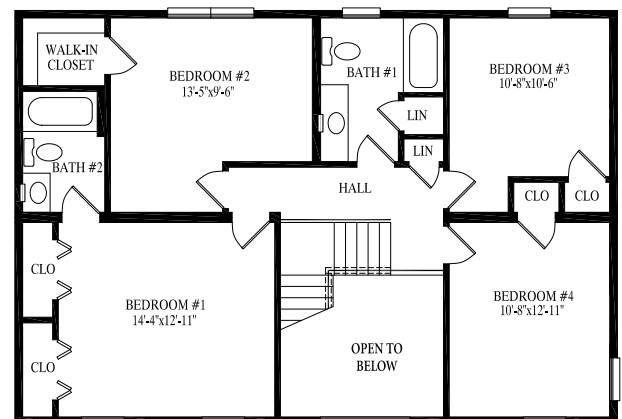


SM-1309

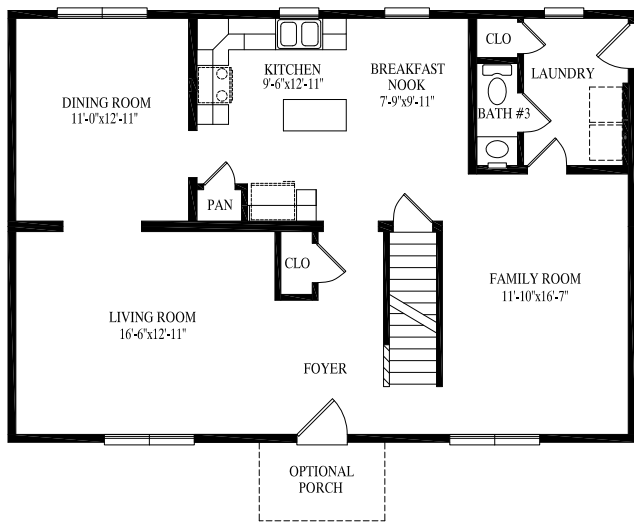
SM-1416



27' 6" x 40'
1100 sq. ft. 1st floor
27' 6" x 40'
1100 sq. ft. 2nd floor
2200 total sq. ft.



Any/all options/upgrades shown on plans, including and without limitation to appliances, bookcases, additional shelving, basement stairs, decks, porches, dormers, interior upgrades, flooring, tile work, bath upgrades, door/window upgrades, exterior upgrades, etc, are not included in price. All plans subject to engineering review and changes may be required to be made per engineering.
SM-1416

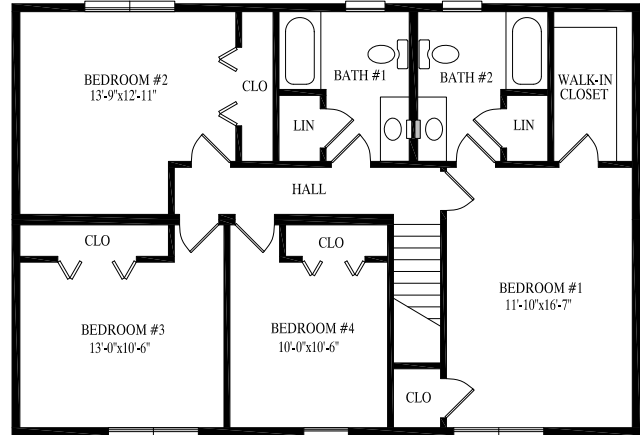


ON SITE
OPEN
BREEZEWAY

OPTIONAL
GARAGE
23'-0" x 23'-0"

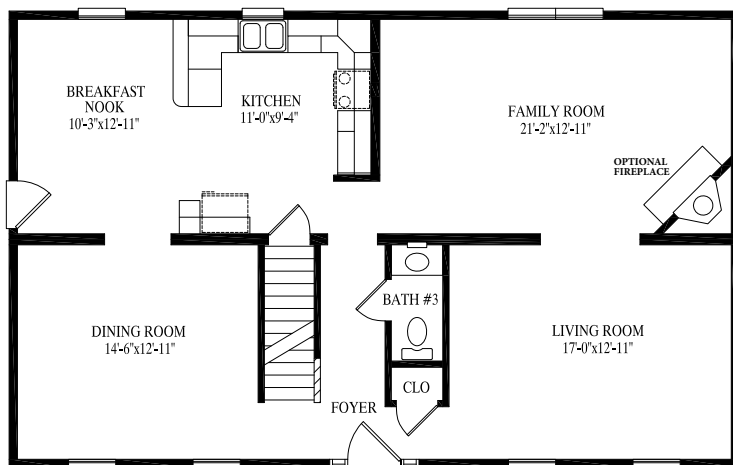
27' 6" x 40'
1100 sq. ft. 1st floor
27' 6" x 40'
1100 sq. ft. 2nd floor
2200 total sq. ft.

Any/all options/upgrades shown on plans, including and without limitation to appliances, bookcases, additional shelving, basement stairs, decks, porches, dormers, interior upgrades, flooring, tile work, bath upgrades, door/window upgrades, exterior upgrades, etc, are not included in price. All plans subject to engineering review and changes may be required to be made per engineering. SM-1415



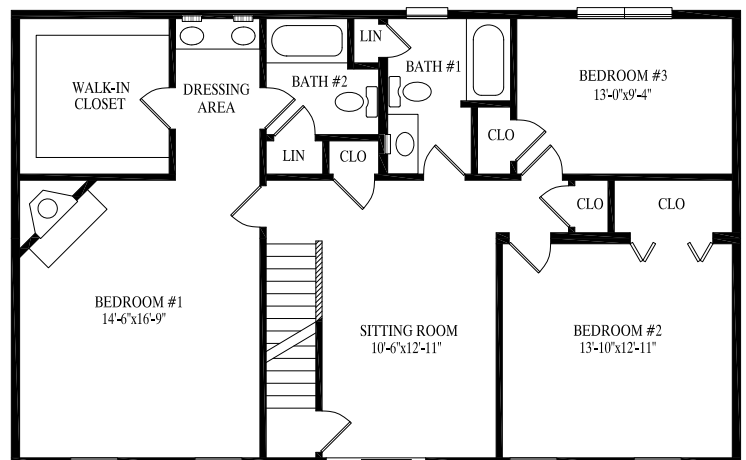
SM-1415

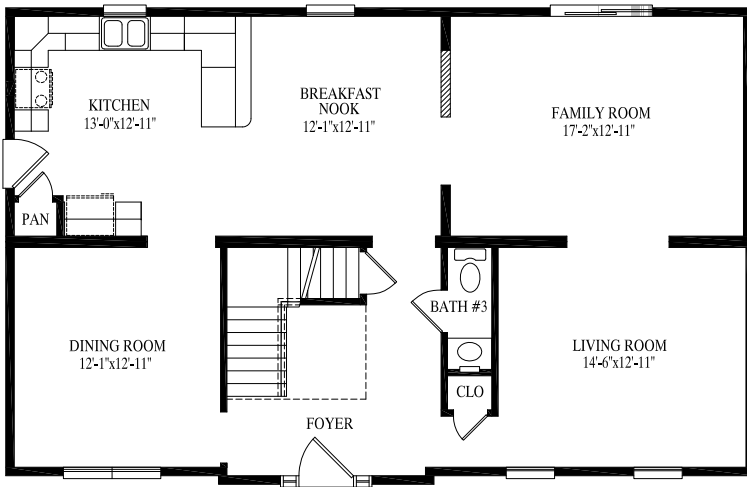
SM-1259



27' 6" x 44'
1210 sq. ft. 1st floor
27' 6" x 44'
1210 sq. ft. 2nd floor
2420 total sq. ft.

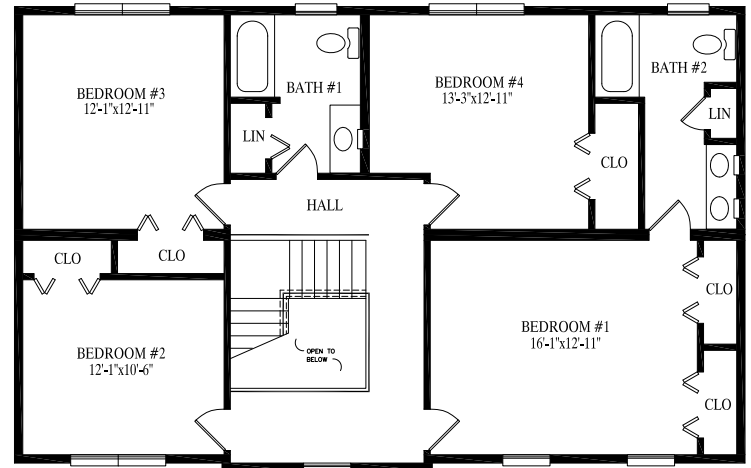
Any/all options/upgrades shown on plans, including and without limitation to appliances, bookcases, additional shelving, basement stairs, decks, porches, dormers, interior upgrades, flooring, tile work, bath upgrades, door/window upgrades, exterior upgrades, etc, are not included in price. All plans subject to engineering review and changes may be required to be made per engineering.
SM-1259





27' 6" x 44'
 1217 sq. ft. 1st floor
 27' 6" x 44'
 1217 sq. ft. 2nd floor
 2434 total sq. ft.

Any/all options/upgrades shown on plans, including and without limitation to appliances, bookcases, additional shelving, basement stairs, decks, porches, dormers, interior upgrades, flooring, tile work, bath upgrades, door/window upgrades, exterior upgrades, etc, are not included in price. All plans subject to engineering review and changes may be required to be made per engineering. SM-1260



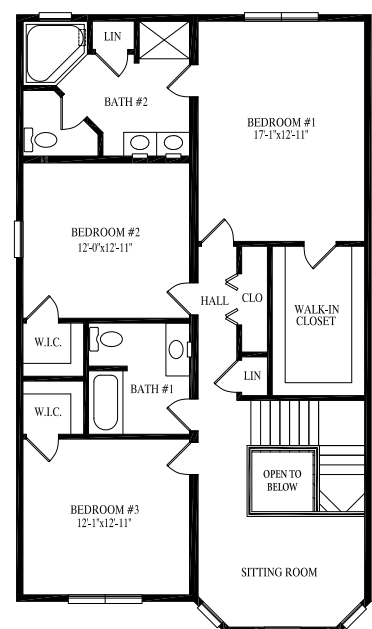
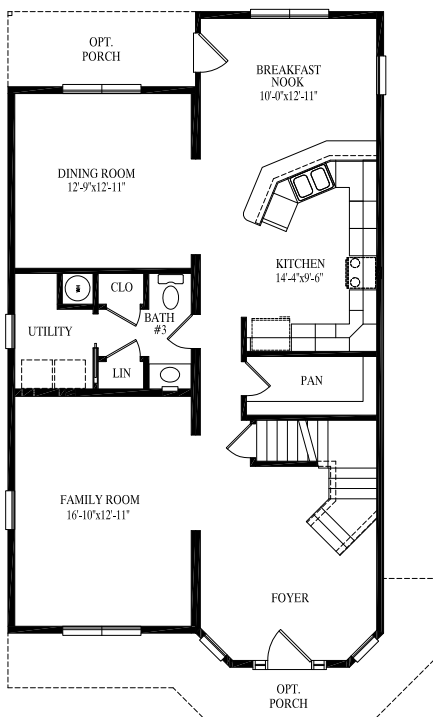
SM-1260

SM-1261



Any/all options/upgrades shown on plans, including and without limitation to appliances, bookcases, additional shelving, basement stairs, decks, porches, dormers, interior upgrades, flooring, tile work, bath upgrades, door/window upgrades, exterior upgrades, etc, are not included in price. All plans subject to engineering review and changes may be required to be made per engineering.
SM-1261

27' 6" x 40' 48"
1204 sq. ft. 1st floor
27' 6" x 45' 6"/48"
1280 sq. ft. 2nd floor
2484 total sq. ft.



Popular Exterior Options...



Single Unit Extension



Bump Out



Reverse Gable



Reverse Gable w/Extension



Dormers



Set Back



Decorative Shingle Return



Shed Dormer



Porch Roof

Great Homes Start With Quality Products...

CertainTeed
QUALITY MADE CERTAIN, satisfaction guaranteed.

Clarion
BATHWARE

DURON
PAINTS & WALLCOVERINGS

Merillat.
Make perfect sense.

MOEN
Buy it for looks. Buy it for life.®

PLY GEM
WINDOWS

RESIDENTIAL
WARRANTY
CORPORATION
10 Year New Home Warranty

TAMKO
ROOFING PRODUCTS

USG

NOTE: All renderings are artist's concepts only and may vary from actual home.



Supreme Modular
3040 White Horse Pike
Hammonton, NJ 08037
www.suprememodular.com

Supreme Modular
3040 White Horse Pike
Hammonton, NJ 08037
www.suprememodular.com
856-652-2382