

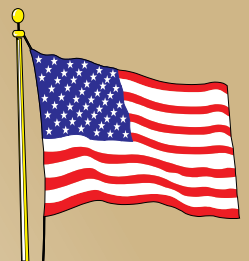


Building **AMERICA'S** Future... Today!



Supreme Modular
3040 White Horse Pike
Hammonton, NJ 08037

Ranch

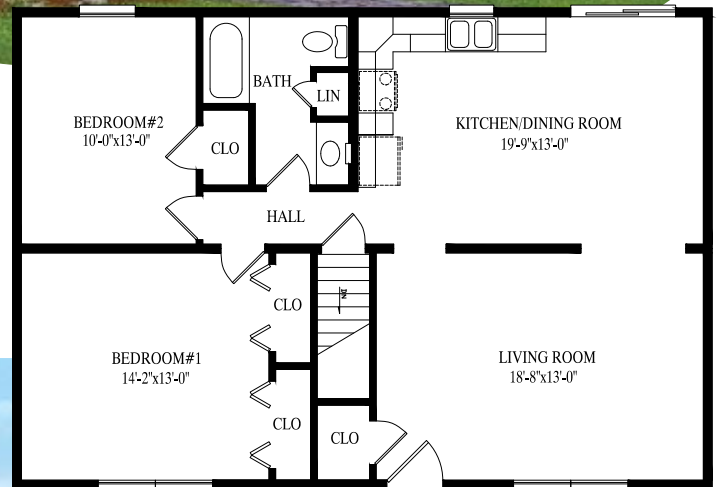


Made in USA

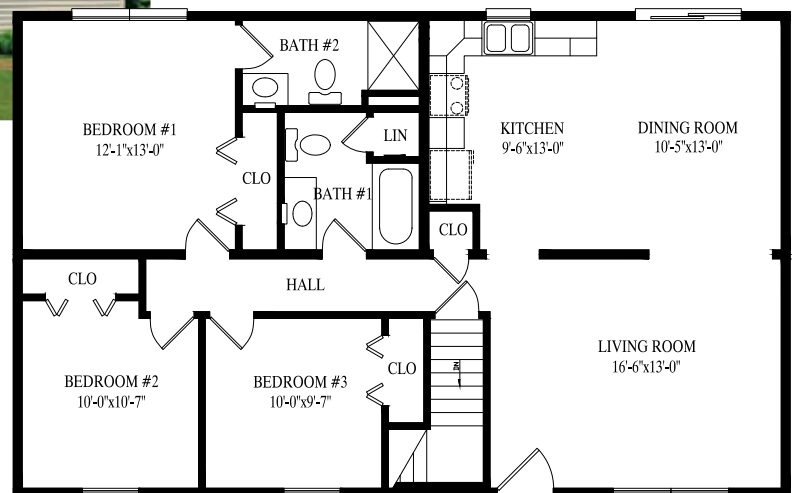
SM-1220

Any/all options/upgrades shown on plans, including and without limitation to appliances, bookcases, additional shelving, basement stairs, decks, porches, dormers, interior upgrades, flooring, tile work, bath upgrades, door/window upgrades, exterior upgrades, etc, are not included in price. All plans subject to engineering review and changes may be required to be made per engineering. SM-1220 SM-1221

27' 6" x 40' Ranch
1100 sq. ft.

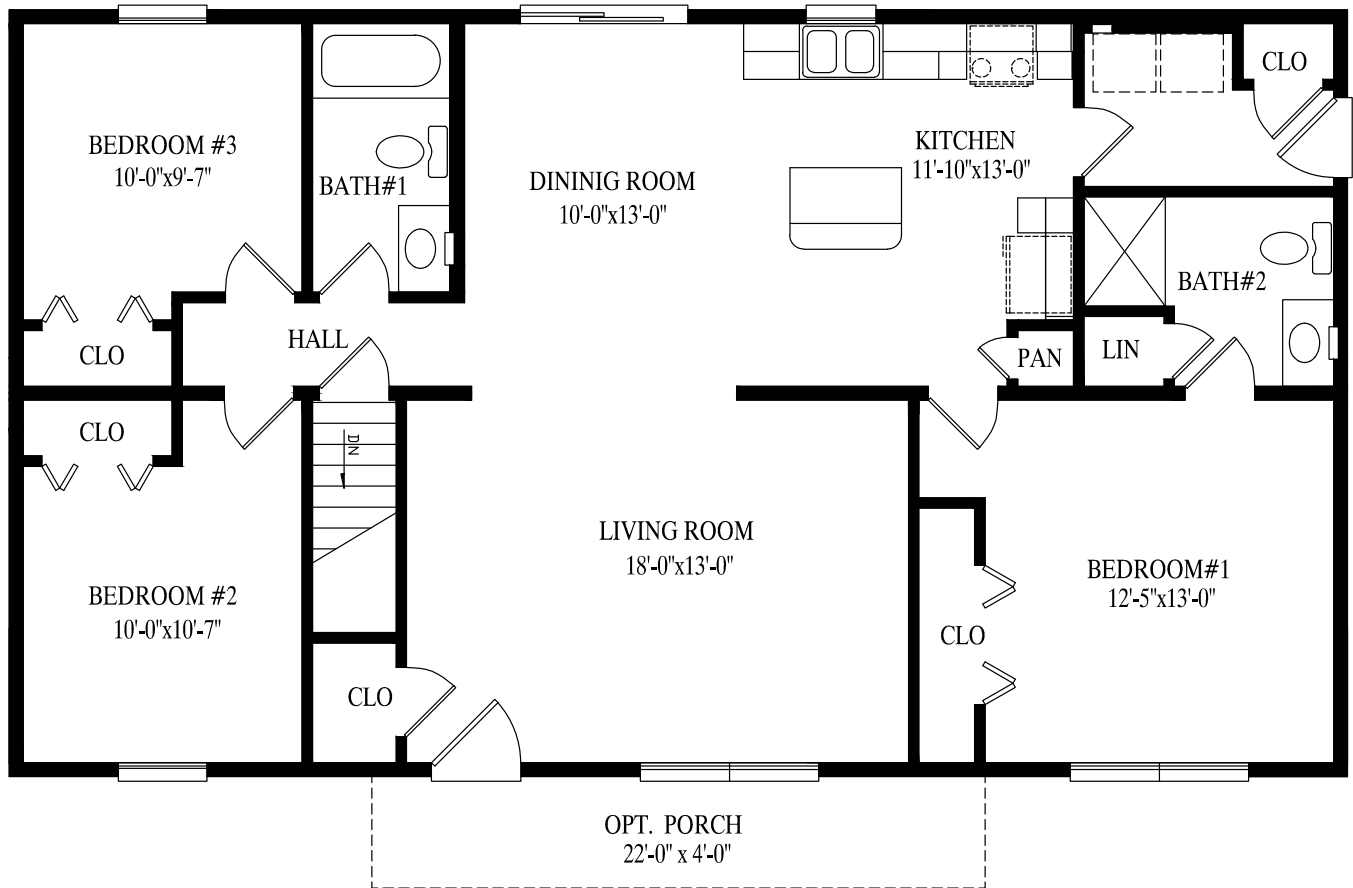


27' 6" x 44' Ranch
1210 sq. ft.



SM-1221

27' 6" x 48' Ranch
1320 sq. ft.

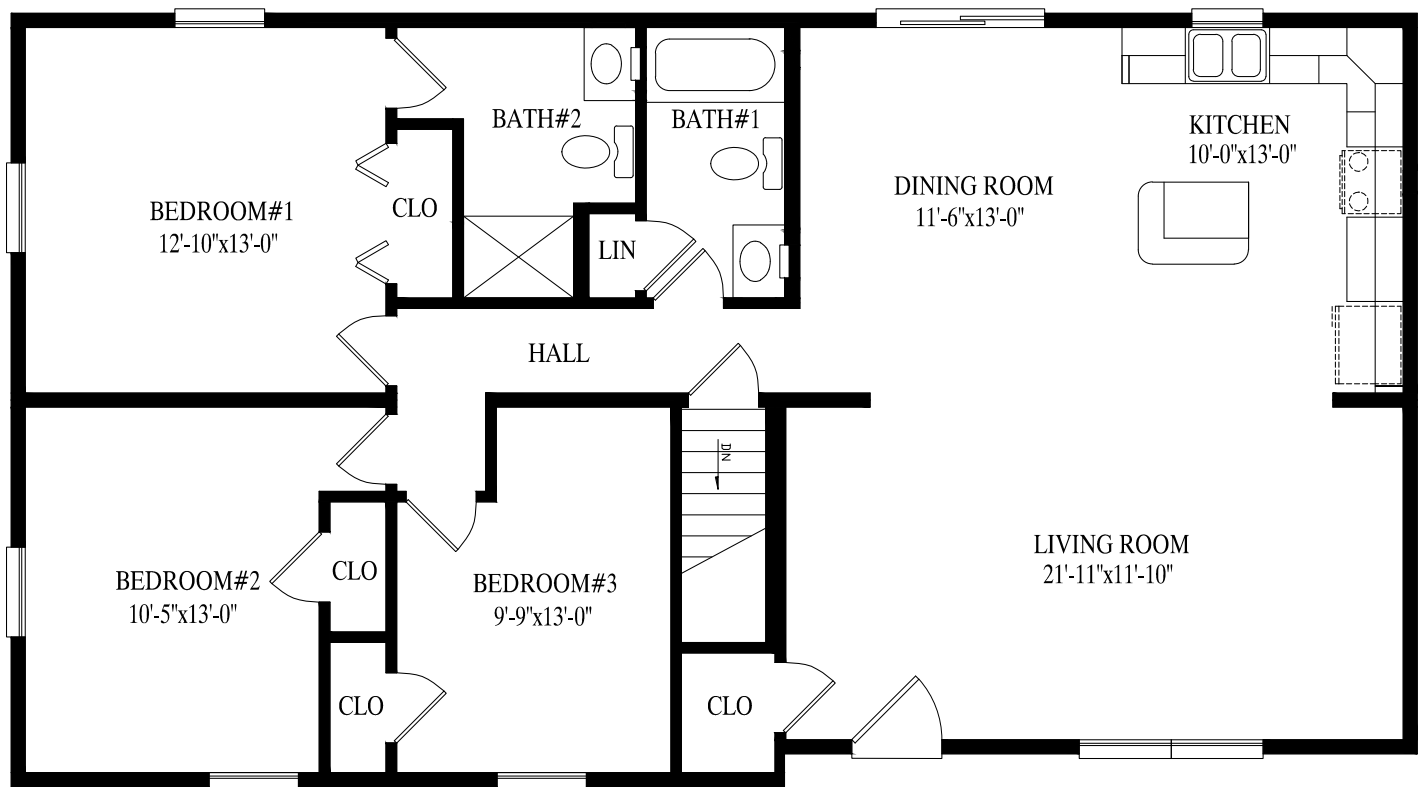


Any/all options/upgrades shown on plans, including and without limitation to appliances, bookcases, additional shelving, basement stairs, decks, porches, dormers, interior upgrades, flooring, tile work, bath upgrades, door/window upgrades, exterior upgrades, etc, are not included in price. All plans subject to engineering review and changes may be required to be made per engineering. SM-1222



SM-1222

27' 6" x 50' Ranch
1348 sq. ft.

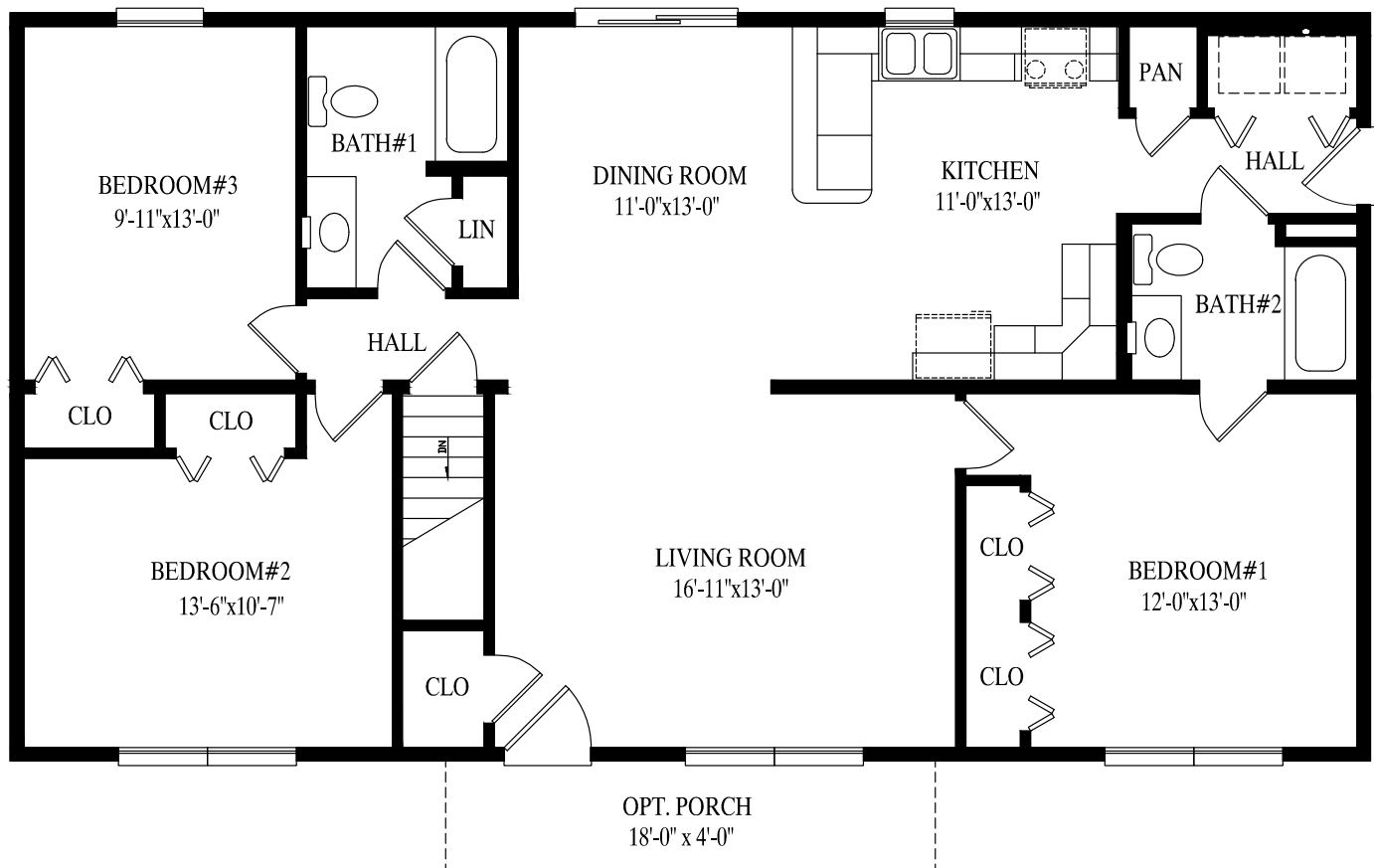


Any/all options/upgrades shown on plans, including and without limitation to appliances, bookcases, additional shelving, basement stairs, decks, porches, dormers, interior upgrades, flooring, tile work, bath upgrades, door/window upgrades, exterior upgrades, etc, are not included in price. All plans subject to engineering review and changes may be required to be made per engineering. SM-1223



SM-1223

27' 6" x 50' Ranch
1375 sq. ft.



Any/all options/upgrades shown on plans, including and without limitation to appliances, bookcases, additional shelving, basement stairs, decks, porches, dormers, interior upgrades, flooring, tile work, bath upgrades, door/window upgrades, exterior upgrades, etc, are not included in price. All plans subject to engineering review and changes may be required to be made per engineering. SM-1224

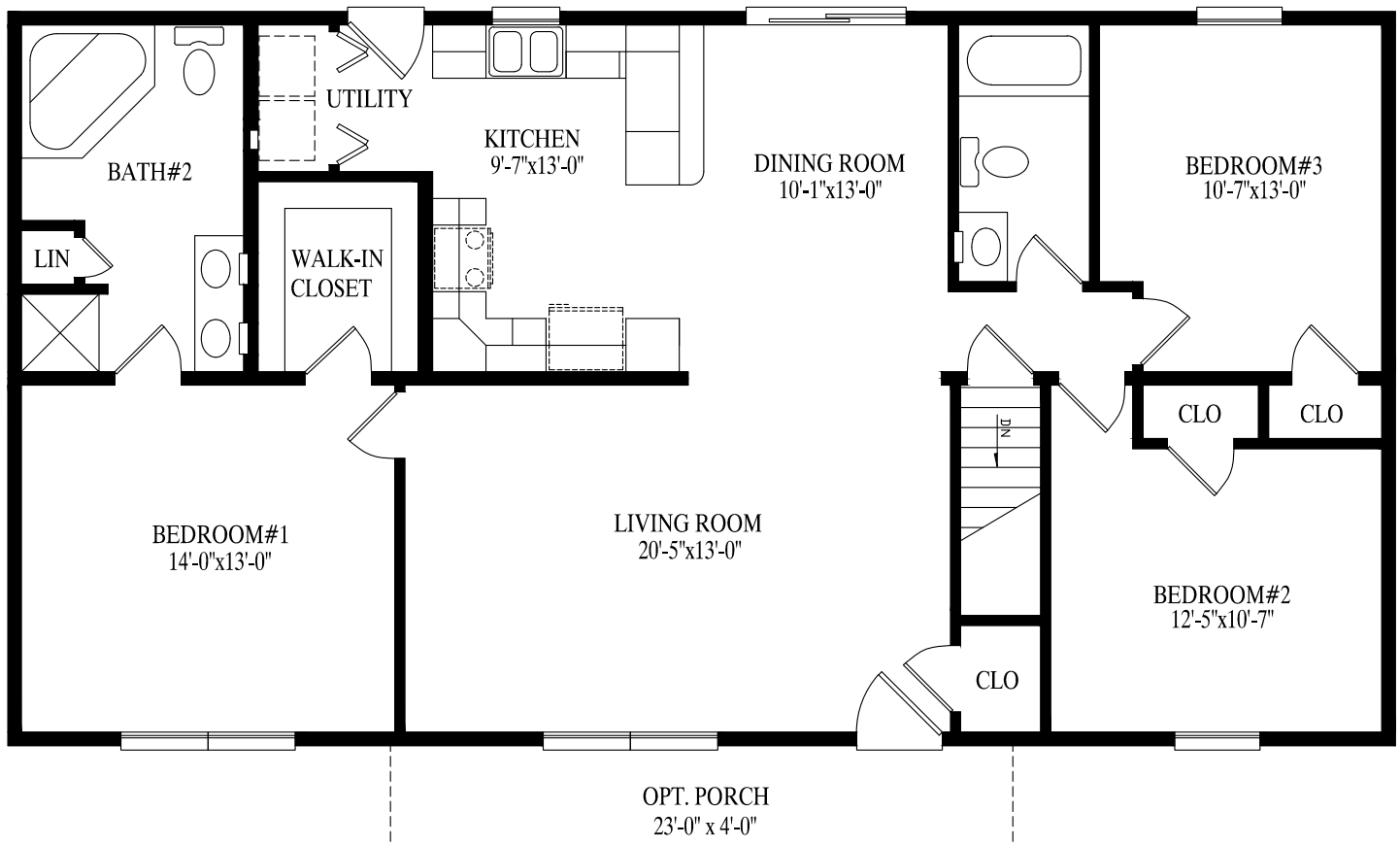


SM-1230

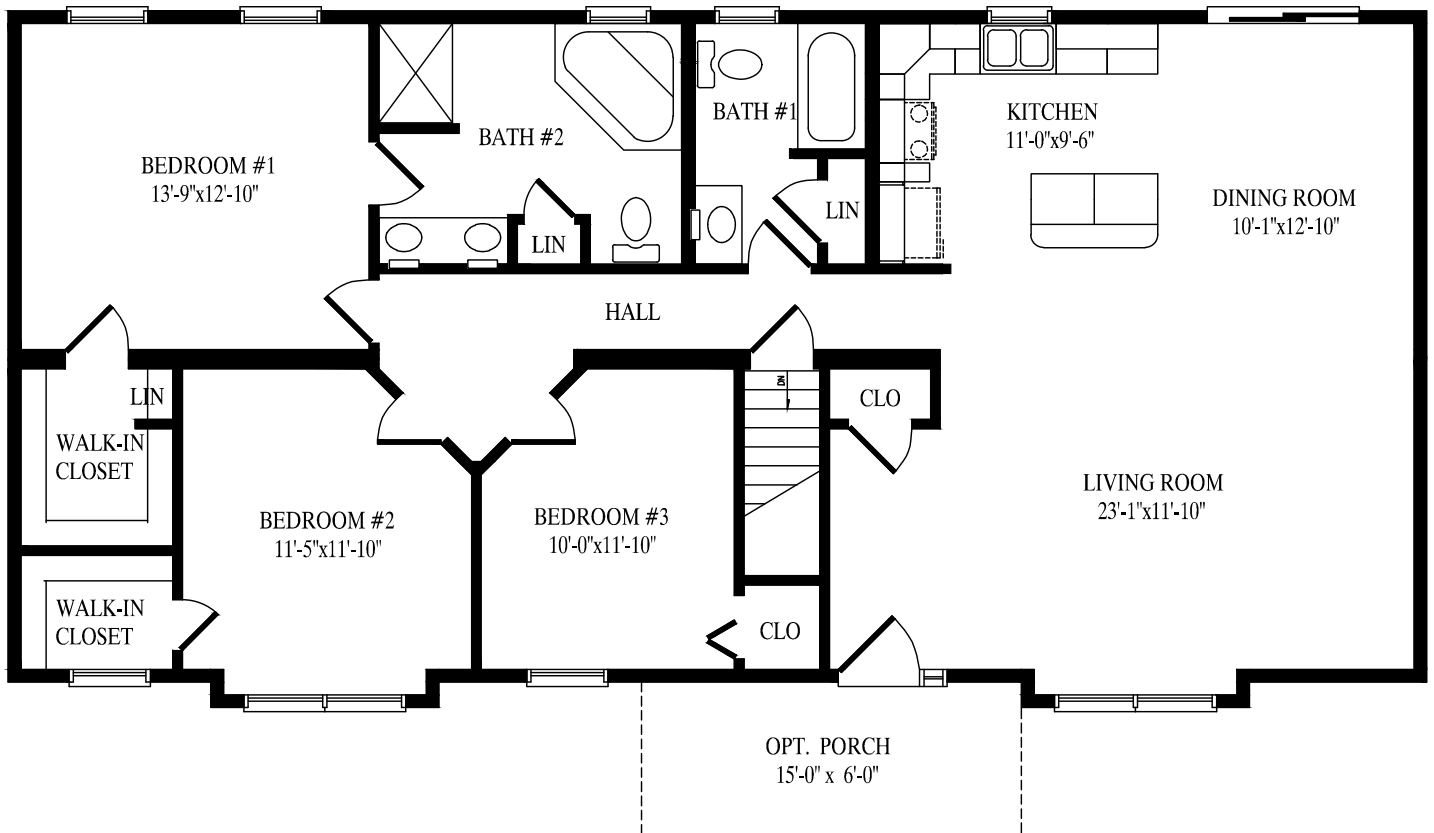


Any/all options/upgrades shown on plans, including and without limitation to appliances, bookcases, additional shelving, basement stairs, decks, porches, dormers, interior upgrades, flooring, tile work, bath upgrades, door/window upgrades, exterior upgrades, etc, are not included in price. All plans subject to engineering review and changes may be required to be made per engineering. SM-1230

27' 6" x 52' Ranch
1430 sq. ft.



27' 6" x 56' Ranch
1503 sq. ft.



Any/all options/upgrades shown on plans, including and without limitation to appliances, bookcases, additional shelving, basement stairs, decks, porches, dormers, interior upgrades, flooring, tile work, bath upgrades, door/window upgrades, exterior upgrades, etc, are not included in price. All plans subject to engineering review and changes may be required to be made per engineering. SM-1231



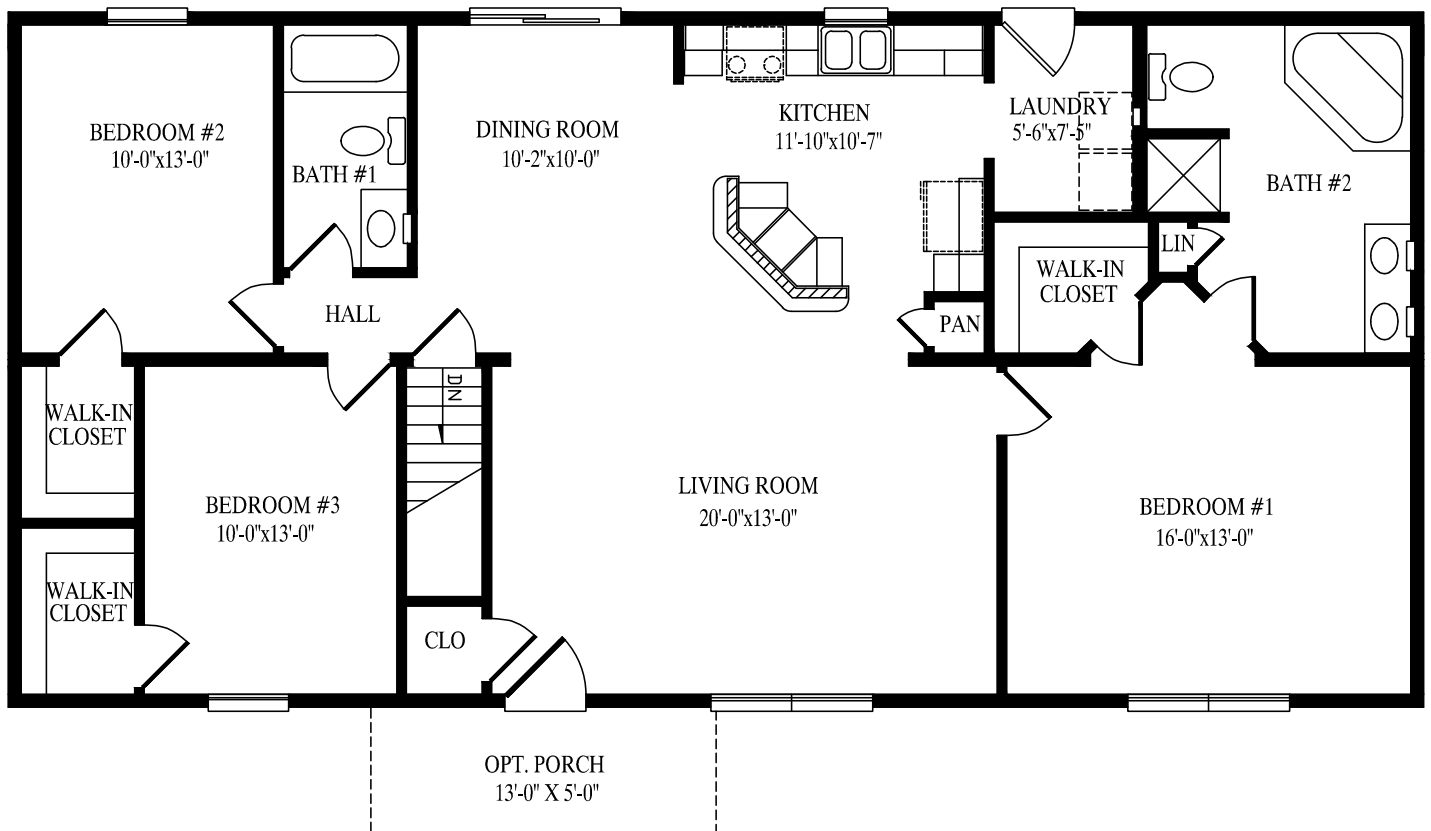
SM-1231

SM-1232



Any/all options/upgrades shown on plans, including and without limitation to appliances, bookcases, additional shelving, basement stairs, decks, porches, dormers, interior upgrades, flooring, tile work, bath upgrades, door/window upgrades, exterior upgrades, etc, are not included in price. All plans subject to engineering review and changes may be required to be made per engineering. SM-1232

27' 6" x 56' Ranch
1540 sq. ft.



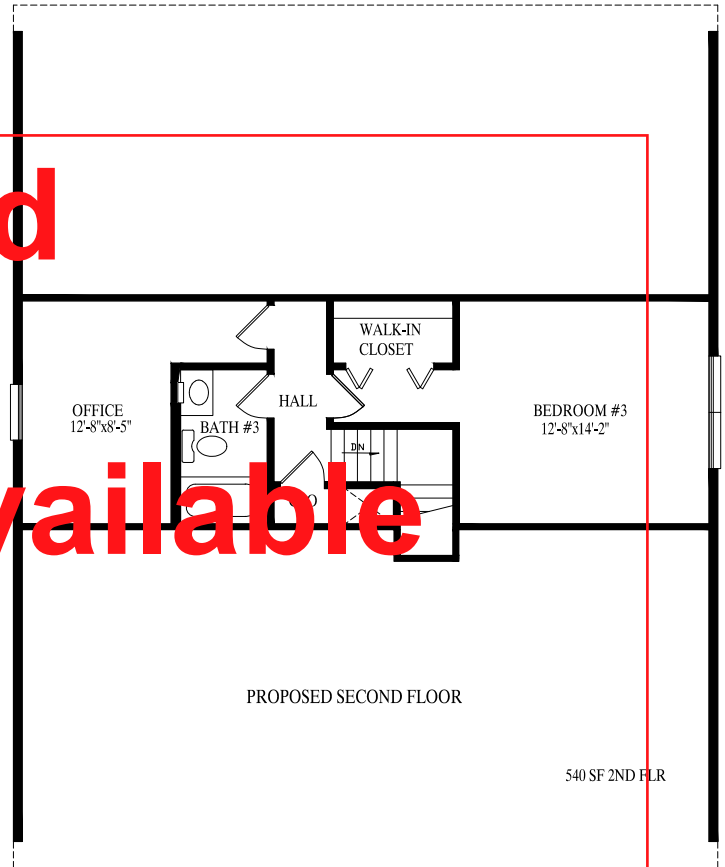
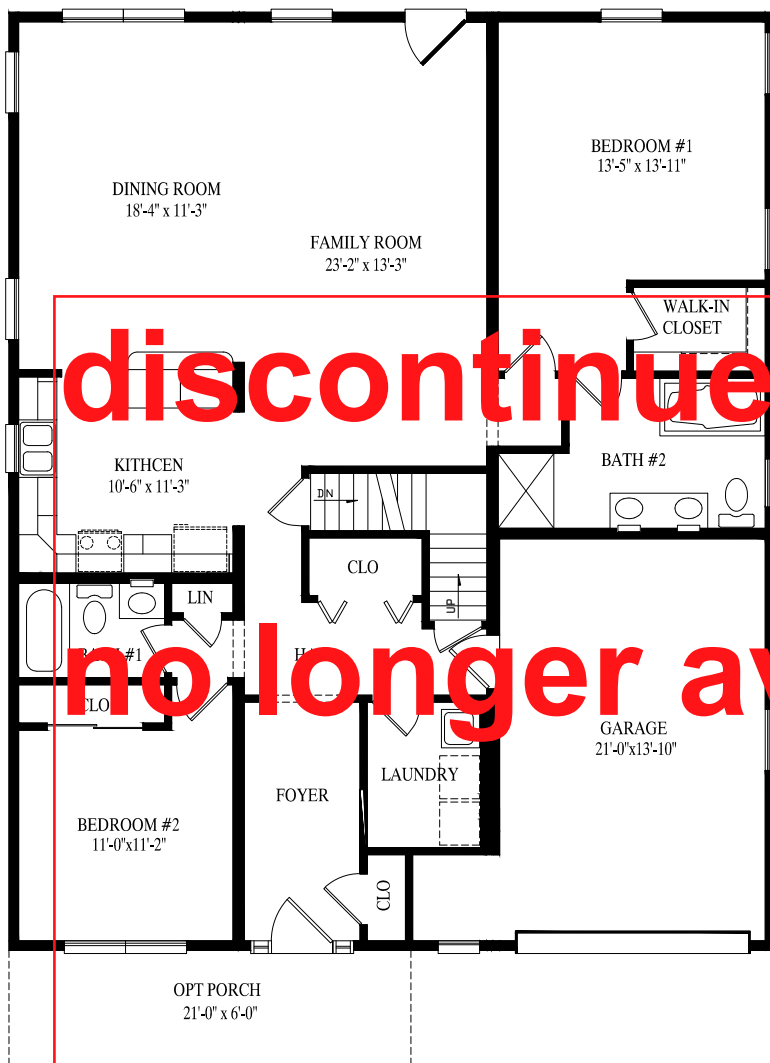
49' x 40' Ranch

1628 living sq. ft. first floor

1960 total sq. ft. first floor

2168 total living sq. ft. first & second floors

2500 total sq. ft. first & second floors



Any/all options/upgrades shown on plans, including and without limitation to appliances, bookcases, additional shelving, basement stairs, decks, porches, dormers, interior upgrades, flooring, tile work, bath upgrades, door/window upgrades, exterior upgrades, etc, are not included in price. All plans subject to engineering review and changes may be required to be made per engineering.

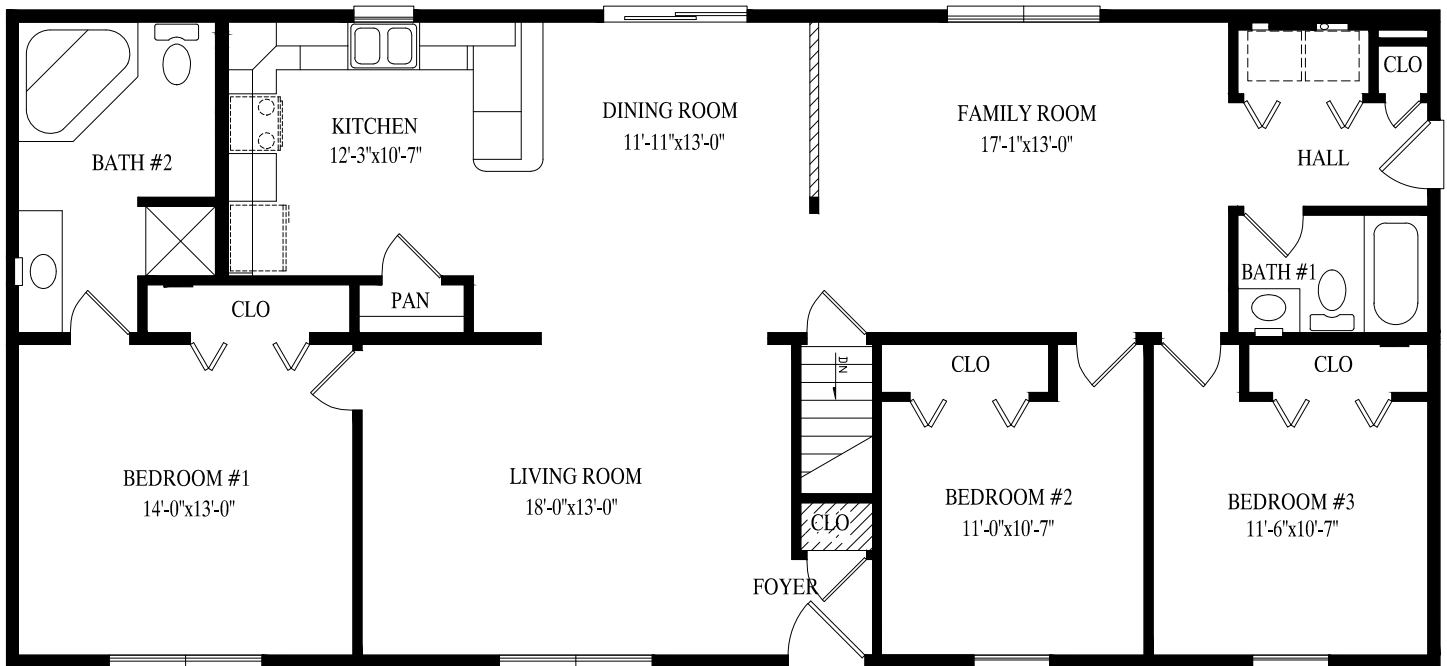
DEVELOPER

SM-1237

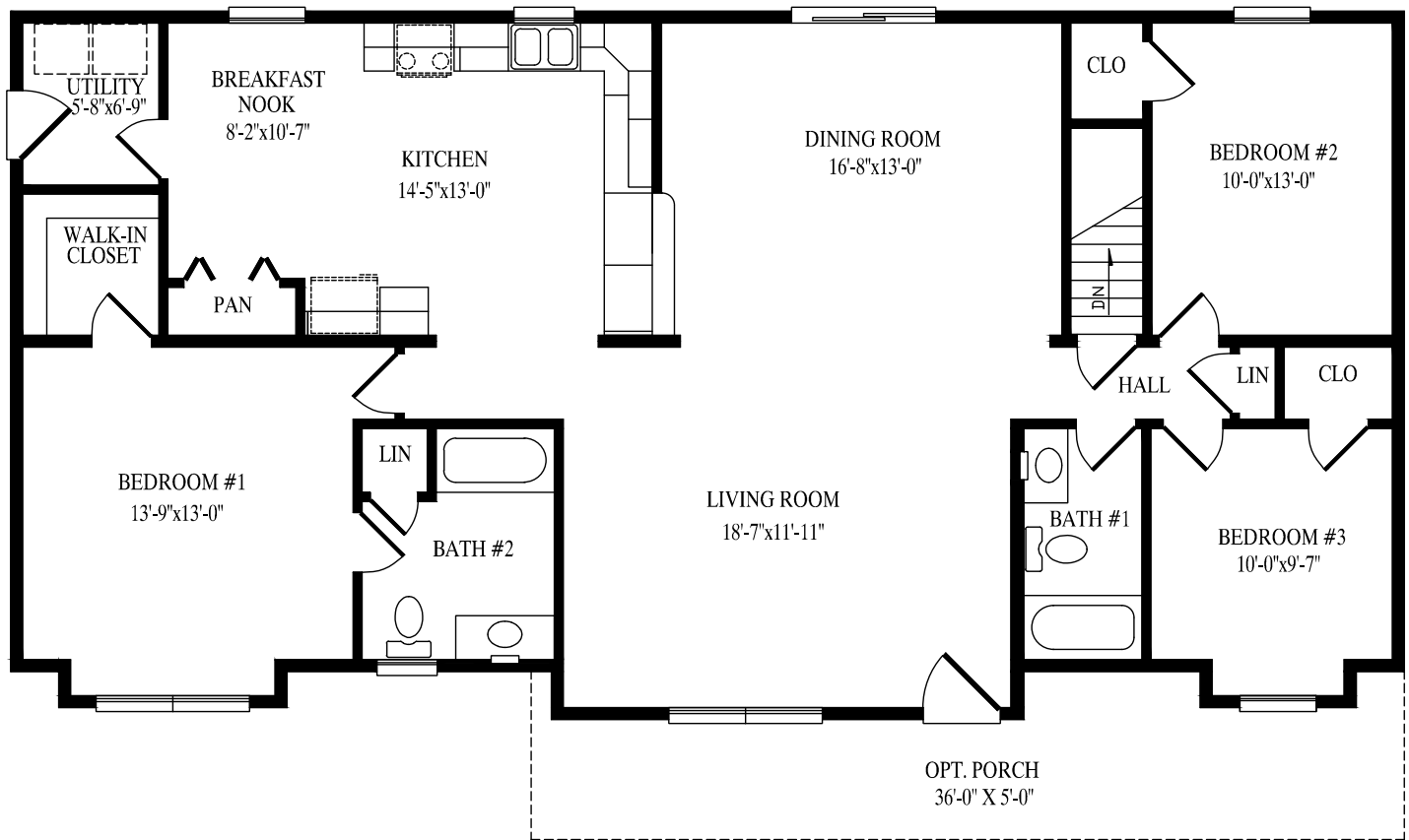


Any/all options/upgrades shown on plans, including and without limitation to appliances, bookcases, additional shelving, basement stairs, decks, porches, dormers, interior upgrades, flooring, tile work, bath upgrades, door/window upgrades, exterior upgrades, etc, are not included in price. All plans subject to engineering review and changes may be required to be made per engineering. SM-1237

27' 6" x 60' Ranch
1650 sq. ft.



27' 6" x 58' Ranch
1658 sq. ft.



Any/all options/upgrades shown on plans, including and without limitation to appliances, bookcases, additional shelving, basement stairs, decks, porches, dormers, interior upgrades, flooring, tile work, bath upgrades, door/window upgrades, exterior upgrades, etc, are not included in price. All plans subject to engineering review and changes may be required to be made per engineering. SM-1229



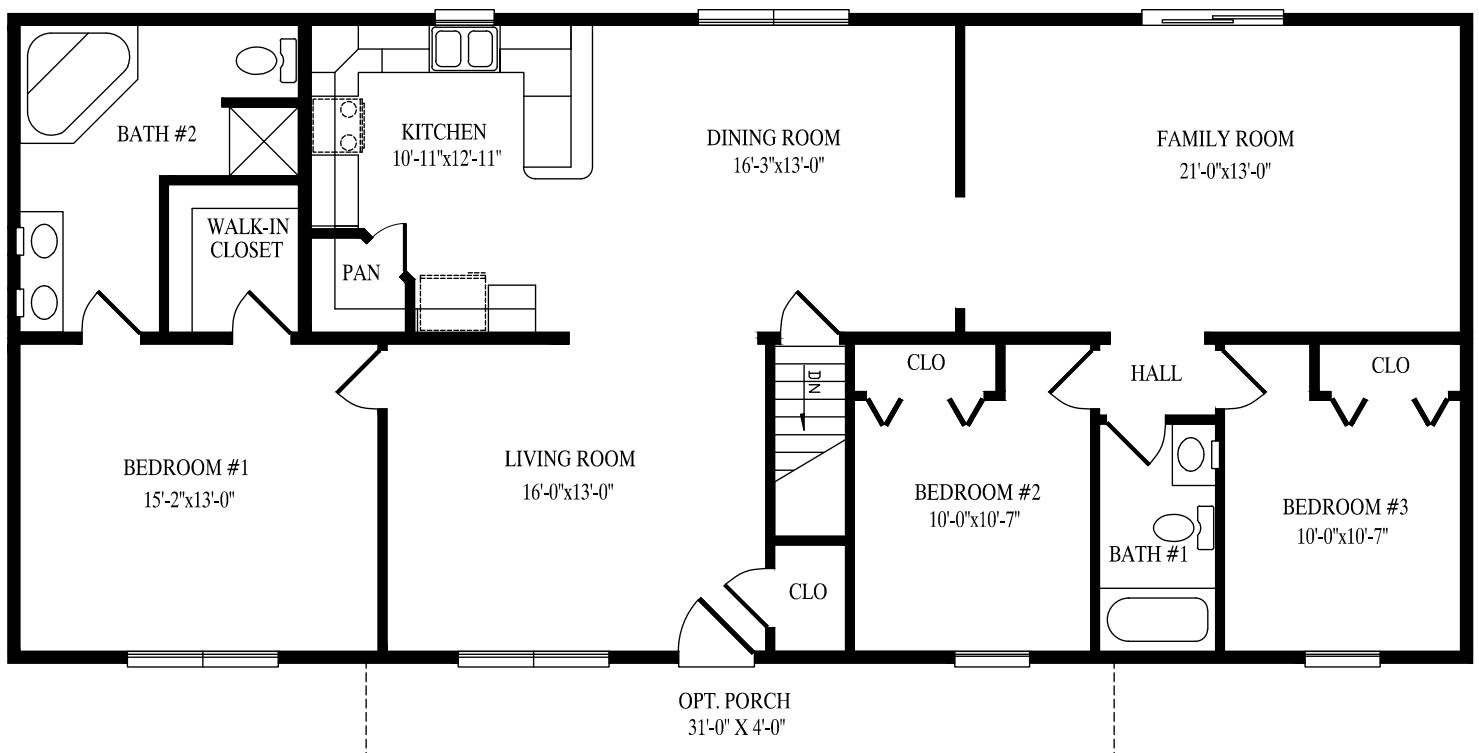
SM-1229

SM-1238

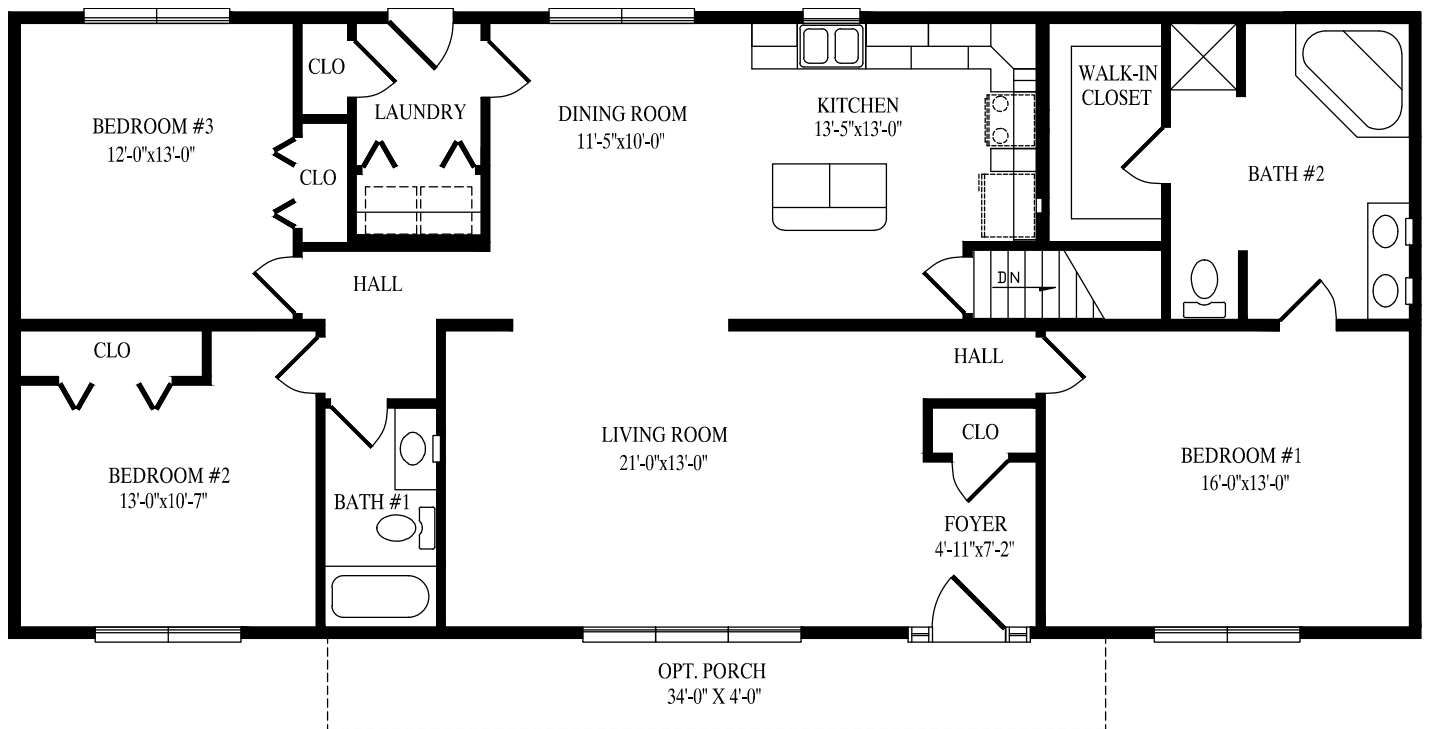


Any/all options/upgrades shown on plans, including and without limitation to appliances, bookcases, additional shelving, basement stairs, decks, porches, dormers, interior upgrades, flooring, tile work, bath upgrades, door/window upgrades, exterior upgrades, etc, are not included in price. All plans subject to engineering review and changes may be required to be made per engineering. SM-1238

27' 6" x 62' Ranch
1705 sq. ft.



27' 6" x 62' Ranch
1705 sq. ft.



Any/all options/upgrades shown on plans, including and without limitation to appliances, bookcases, additional shelving, basement stairs, decks, porches, dormers, interior upgrades, flooring, tile work, bath upgrades, door/window upgrades, exterior upgrades, etc, are not included in price. All plans subject to engineering review and changes may be required to be made per engineering. SM-1239

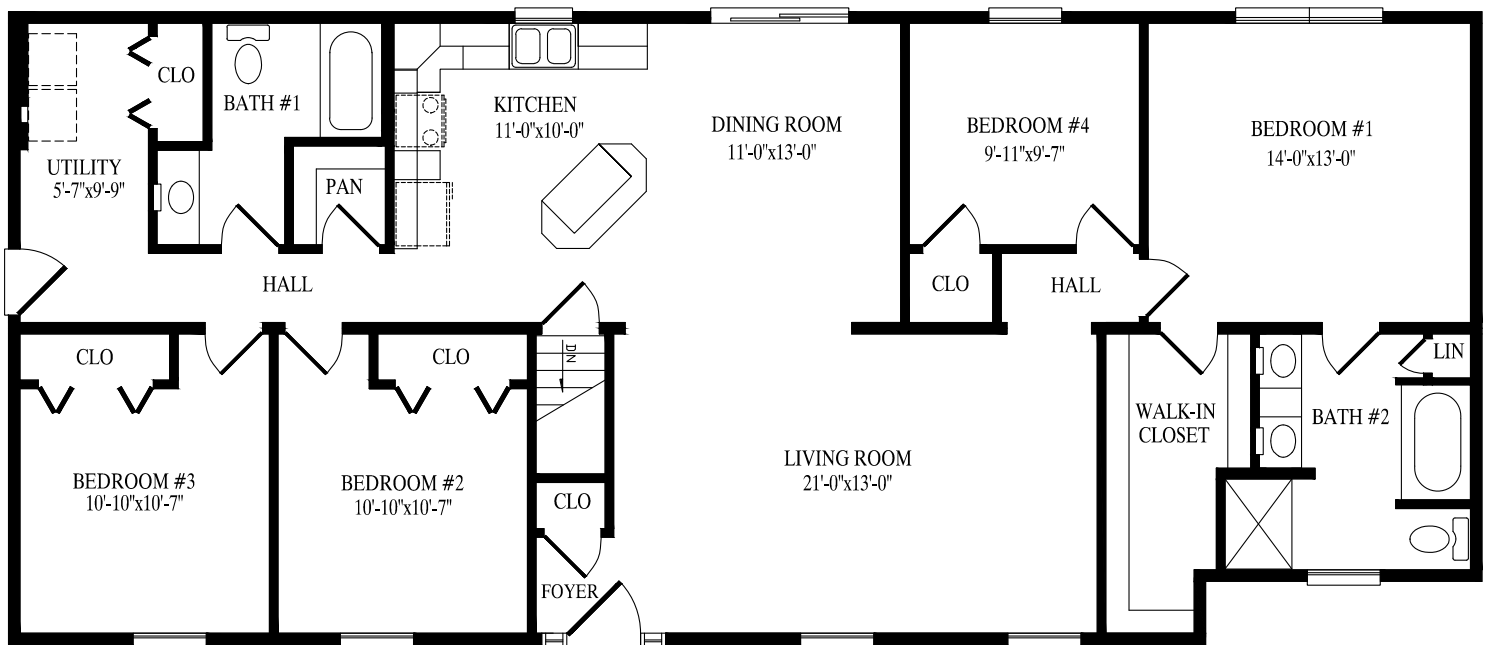


SM-1240



Any/all options/upgrades shown on plans, including and without limitation to appliances, bookcases, additional shelving, basement stairs, decks, porches, dormers, interior upgrades, flooring, tile work, bath upgrades, door/window upgrades, exterior upgrades, etc, are not included in price. All plans subject to engineering review and changes may be required to be made per engineering. SM-1240

27' 6" x 64' Ranch
1727 sq. ft.

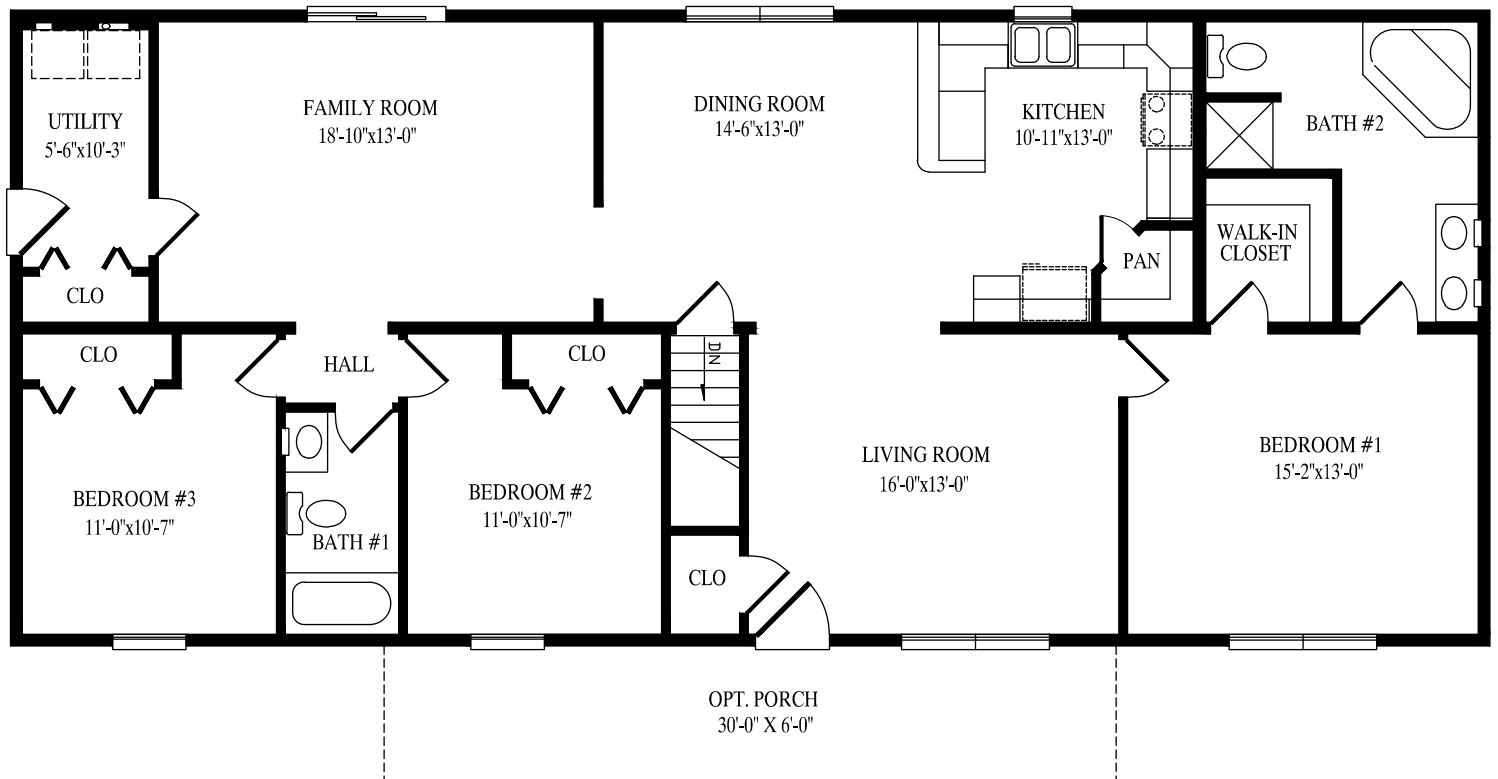


SM-1241



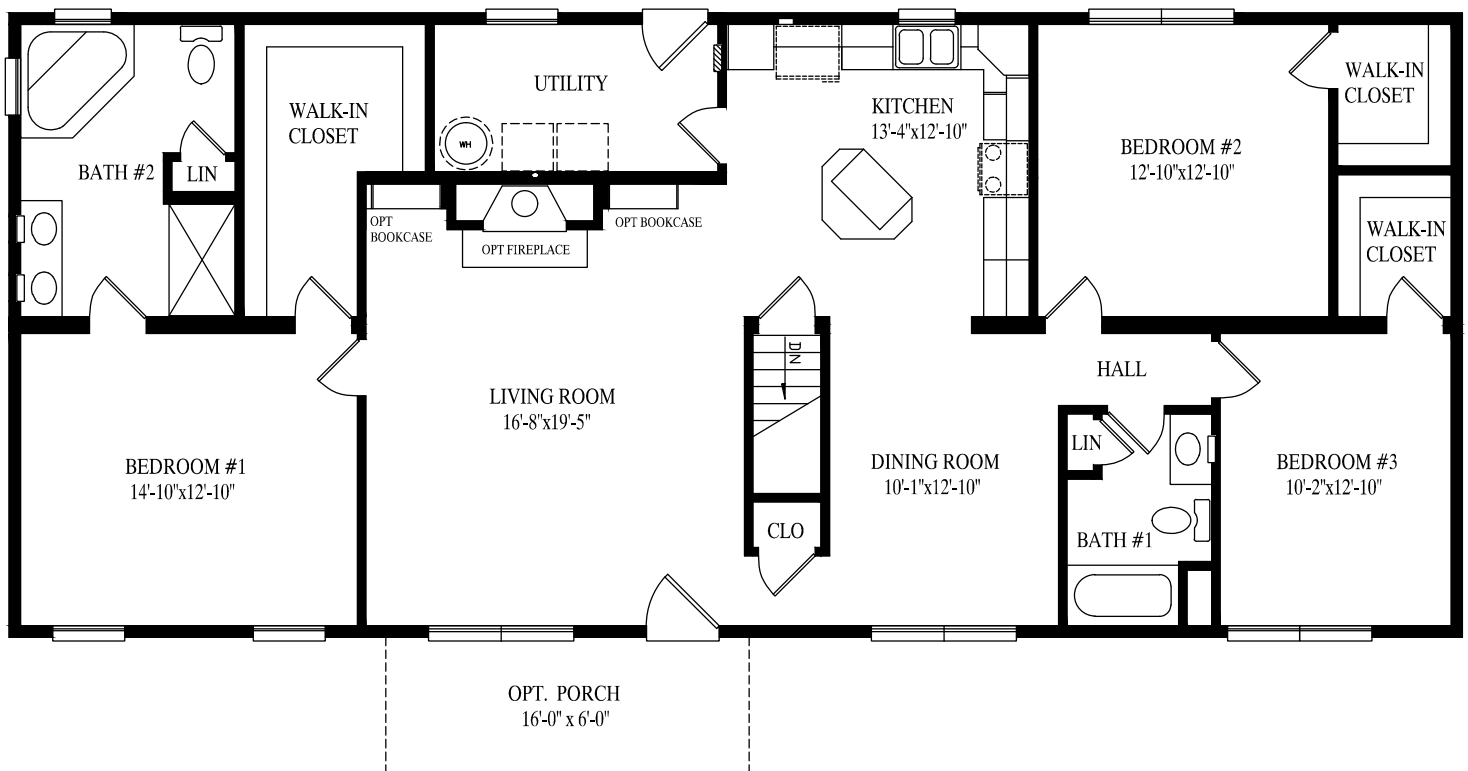
Any/all options/upgrades shown on plans, including and without limitation to appliances, bookcases, additional shelving, basement stairs, decks, porches, dormers, interior upgrades, flooring, tile work, bath upgrades, door/window upgrades, exterior upgrades, etc, are not included in price. All plans subject to engineering review and changes may be required to be made per engineering. SM-1241

27' 6" x 64' Ranch
1760 sq. ft.



Any/all options/upgrades shown on plans, including and without limitation to appliances, bookcases, additional shelving, basement stairs, decks, porches, dormers, interior upgrades, flooring, tile work, bath upgrades, door/window upgrades, exterior upgrades, etc, are not included in price. All plans subject to engineering review and changes may be required to be made per engineering. SM-1242

27' 6" x 64' Ranch
1760 sq. ft.



SM-1242

Popular Exterior Options...



Single Unit Extension



Bump Out



Reverse Gable



Reverse Gable w/Extension



Dormers



Set Back



Decorative Shingle Return



Shed Dormer



Porch Roof

Great Homes Start With Quality Products...

CertainTeed
QUALITY MADE CERTAIN, satisfaction guaranteed.

Clarion
BATHWARE

DURON
PAINTS & WALLCOVERINGS

Merillat.
Make perfect sense.

MOEN
Buy it for looks. Buy it for life.®

PLY GEM
WINDOWS

RESIDENTIAL
WARRANTY
CORPORATION
10 Year New Home Warranty

TAMKO
ROOFING PRODUCTS

USG

NOTE: All renderings are artist's concepts only and may vary from actual home.



Supreme Modular
3040 White Horse Pike
Hammonton, NJ 08037
www.suprememodular.com

Supreme Modular
3040 White Horse Pike
Hammonton, NJ 08037
www.suprememodular.com
856-652-2382