

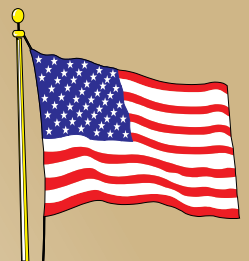


# Building **AMERICA'S** Future... Today!

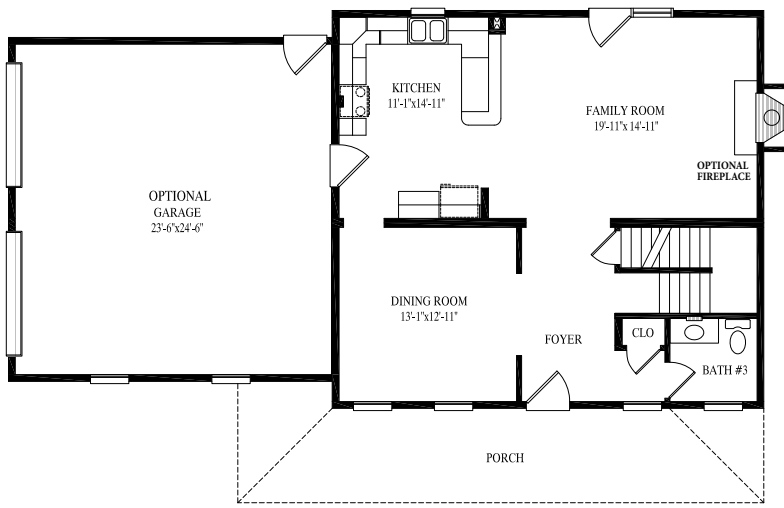


Supreme Modular  
3040 White Horse Pike  
Hammonton, NJ 08037

## Two-Story

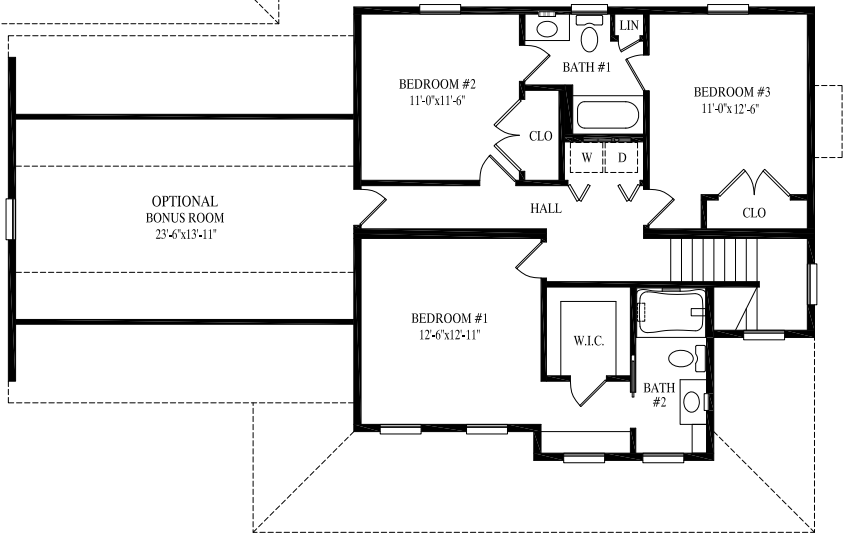


Made in USA



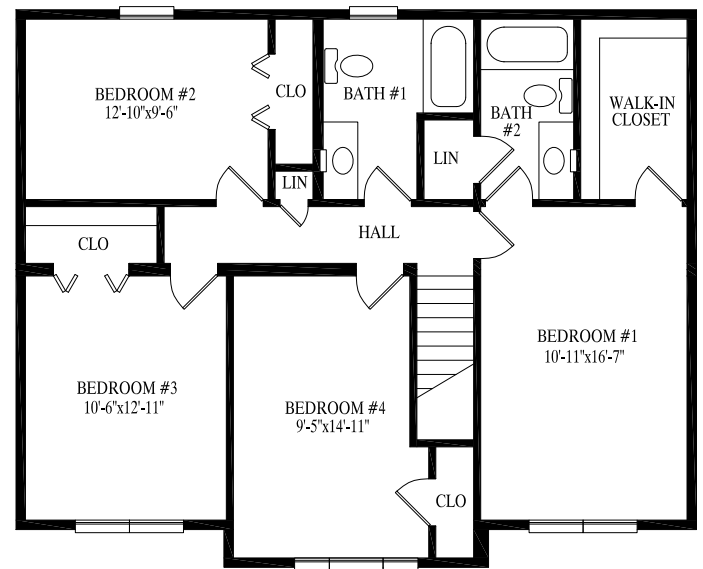
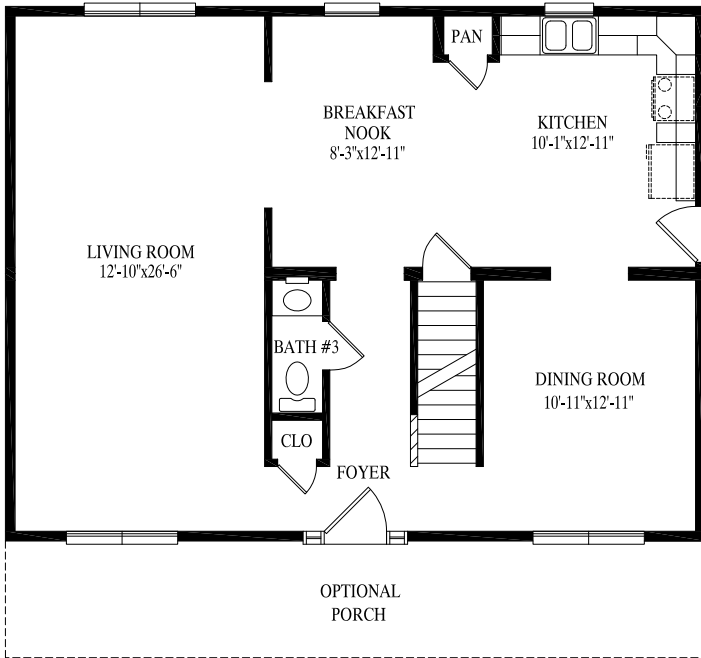
29' 6" x 32'  
 944 sq. ft. 1st floor  
 31' 6" x 32'  
 923 sq. ft. 2nd floor  
 1867 total sq. ft.

Any/all options/upgrades shown on plans, including and without limitation to appliances, bookcases, additional shelving, basement stairs, decks, porches, dormers, interior upgrades, flooring, tile work, bath upgrades, door/window upgrades, exterior upgrades, etc, are not included in price. All plans subject to engineering review and changes may be required to be made per engineering.



HOLBROOK





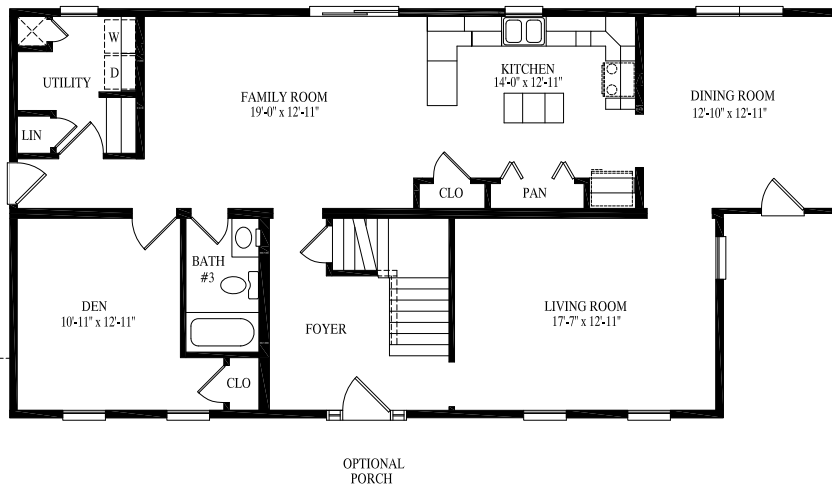
27' 6" x 36'  
990 sq. ft. 1st floor  
29' 6" x 36'  
1018 sq. ft. 2nd floor  
2008 total sq. ft.



Any/all options/upgrades shown on plans, including and without limitation to appliances, bookcases, additional shelving, basement stairs, decks, porches, dormers, interior upgrades, flooring, tile work, bath upgrades, door/window upgrades, exterior upgrades, etc., are not included in price. All plans subject to engineering review and changes may be required to be made per engineering.  
\*\*\*Room sizes shown may be different than actual construction room sizes as these floor plans are informal and are for information purposes only. Porch on site by Buyer as part of Buyer site work. Options shown are not included and are not guaranteed to be sold by Supreme Modular as said options may be done by Buyer during Buyer site work.

MORRIS

# MONTGOMERY

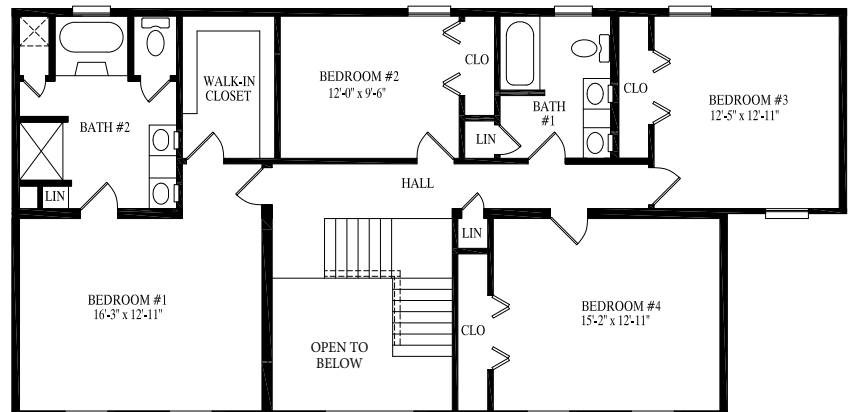


27' 6" x 56'  
1430 sq. ft. 1st floor

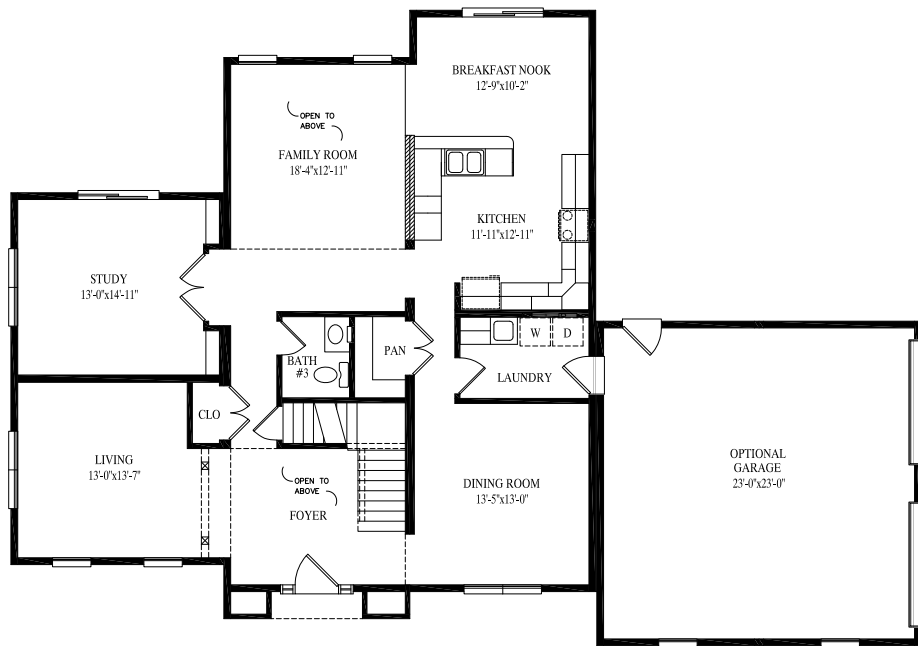
27' 6" x 56'  
1430 sq. ft. 2nd floor

2860 total sq. ft.

Any/all options/upgrades shown on plans, including and without limitation to appliances, bookcases, additional shelving, basement stairs, decks, porches, dormers, interior upgrades, flooring, tile work, bath upgrades, door/window upgrades, exterior upgrades, etc, are not included in price. All plans subject to engineering review and changes may be required to be made per engineering.







45' x 43' 3"  
1582 sq. ft. 1st floor  
45' x 43' 3"  
1582 sq. ft. 2nd floor  
3164 total sq. ft.

Any/all options/upgrades shown on plans, including and without limitation to appliances, bookcases, additional shelving, basement stairs, decks, porches, dormers, interior upgrades, flooring, tile work, bath upgrades, door/window upgrades, exterior upgrades, etc, are not included in price. All plans subject to engineering review and changes may be required to be made per engineering.



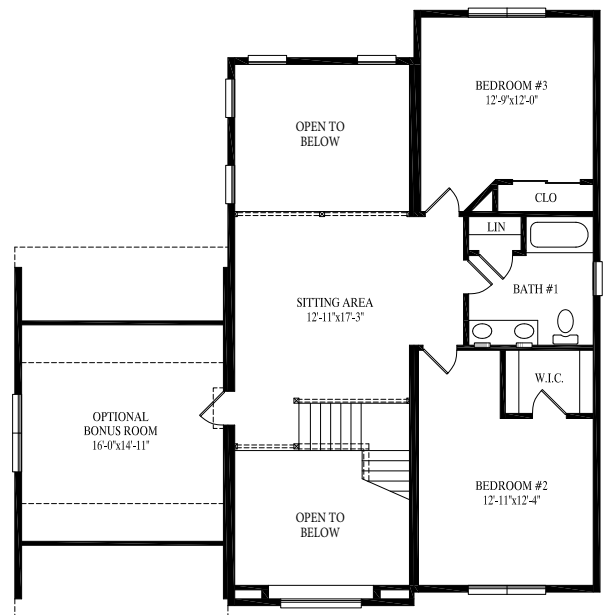
SPRINGFIELD

# BROOKMERE



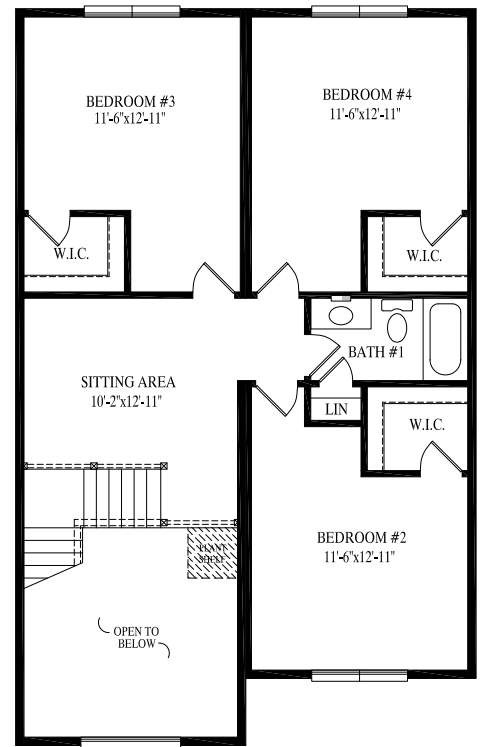
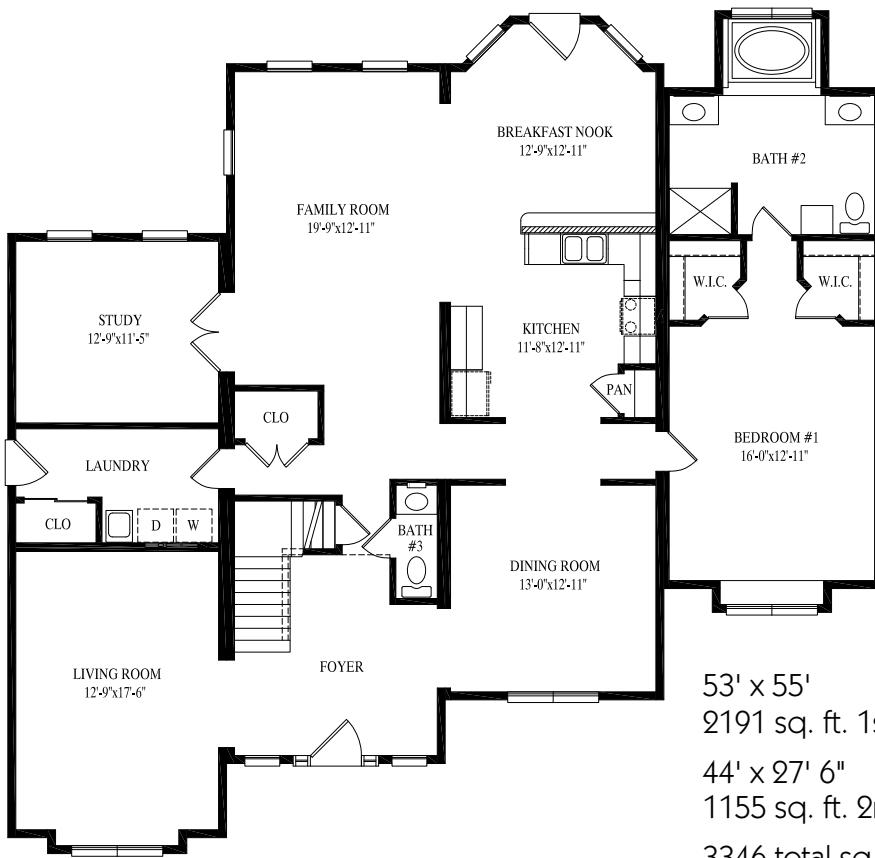
Any/all options/upgrades shown on plans, including and without limitation to appliances, bookcases, additional shelving, basement stairs, decks, porches, dormers, interior upgrades, flooring, tile work, bath upgrades, door/window upgrades, exterior upgrades, etc., are not included in price. All plans subject to engineering review and changes may be required to be made per engineering.

\*\*\*Room sizes shown may be different than actual construction room sizes as these floor plans are informal and are for information purposes only. Options shown are not included and are not guaranteed to be sold by Supreme Modular as said options may be done by Buyer during Buyer site work. Garage supplied and installed on site by Buyer as part of Buyer site work.



45' x 43' 3"  
1463 sq. ft. 1st floor  
40' 6" x 43' 3"  
1148 sq. ft. 2nd floor  
3187 total sq. ft.





53' x 55'  
2191 sq. ft. 1st floor  
44' x 27' 6"  
1155 sq. ft. 2nd floor  
3346 total sq. ft.



Any/all options/upgrades shown on plans, including and without limitation to appliances, bookcases, additional shelving, basement stairs, decks, porches, dormers, interior upgrades, flooring, tile work, bath upgrades, door/window upgrades, exterior upgrades, etc, are not included in price. All plans subject to engineering review and changes may be required to be made per engineering.

\*\*\*Room sizes shown may be different than actual construction room sizes as these floor plans are informal and are for information purposes only. Bonus area is unfinished and will be finished on site by Buyer. Options shown are not included and are not guaranteed to be sold by Supreme Modular as said options may be done by Buyer during Buyer site work.

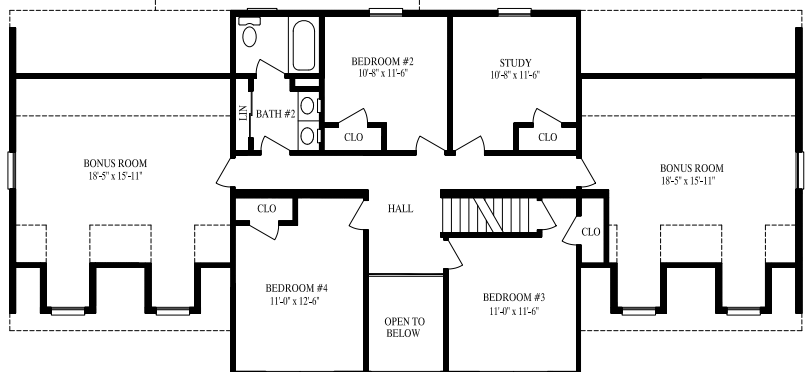
WILLOW

# WESTMORELAND



48' 3" x 68'  
2323 sq. ft. 1st floor  
31' 6" x 68'  
1650 sq. ft. 2nd floor  
3973 total sq. ft.

Any/all options/upgrades shown on plans, including and without limitation to appliances, bookcases, additional shelving, basement stairs, decks, porches, dormers, interior upgrades, flooring, tile work, bath upgrades, door/window upgrades, exterior upgrades, etc, are not included in price. All plans subject to engineering review and changes may be required to be made per engineering.





# Popular Exterior Options...



Single Unit Extension



Bump Out



Reverse Gable



Reverse Gable w/Extension



Dormers



Set Back



Decorative Shingle Return



Shed Dormer



Porch Roof

## Great Homes Start With Quality Products...

**CertainTeed**  
QUALITY MADE CERTAIN, satisfaction guaranteed.

**Clarion**  
BATHWARE

**DURON**  
PAINTS & WALLCOVERINGS

**Merillat.**  
Make perfect sense.

**MOEN**  
Buy it for looks. Buy it for life.®

**PLY GEM**  
WINDOWS

**RESIDENTIAL**  
**WARRANTY**  
**CORPORATION**  
10 Year New Home Warranty

**TAMKO**  
ROOFING PRODUCTS

**USG**

NOTE: All renderings are artist's concepts only and may vary from actual home.



Supreme Modular  
3040 White Horse Pike  
Hammonton, NJ 08037  
[www.suprememodular.com](http://www.suprememodular.com)

Supreme Modular  
3040 White Horse Pike  
Hammonton, NJ 08037  
[www.suprememodular.com](http://www.suprememodular.com)  
856-652-2382