



Building  
**AMERICA'S**  
Future... Today!

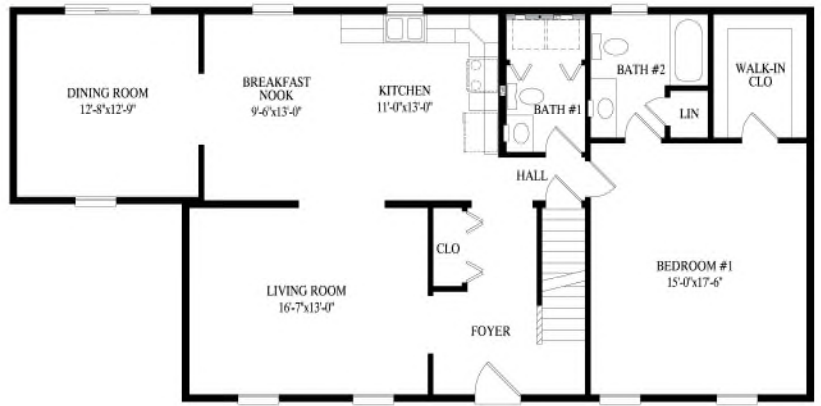


Supreme Modular  
3040 White Horse Pike  
Hammonton, NJ 08037  
[www.suprememodular.com](http://www.suprememodular.com)

**Cape Homes**

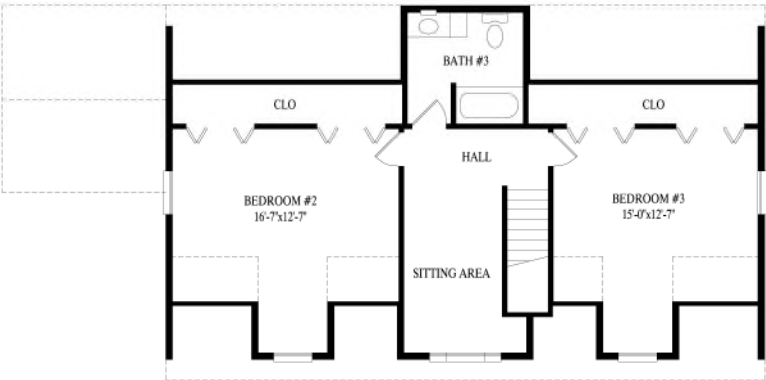


Made in USA

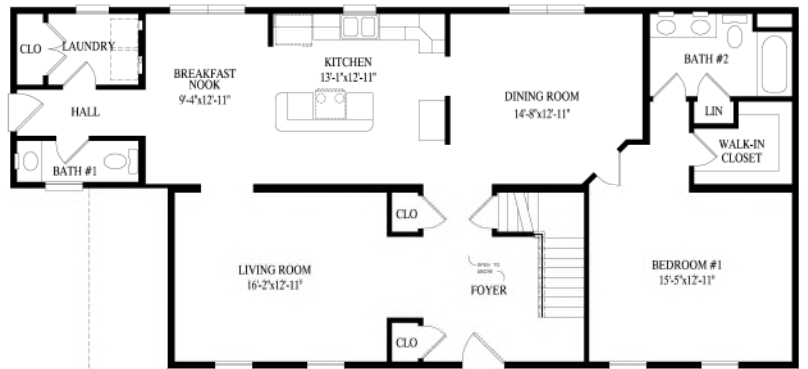


### Cameron III

27' 6" x 44' 56" Cape  
 1375 sq. ft. first floor  
 Also available in 26' 4" & 31' 6" wide



Proposed Second Floor – 871 sq. ft.



OPT. PORCH  
 6'-0" x 73'-9"



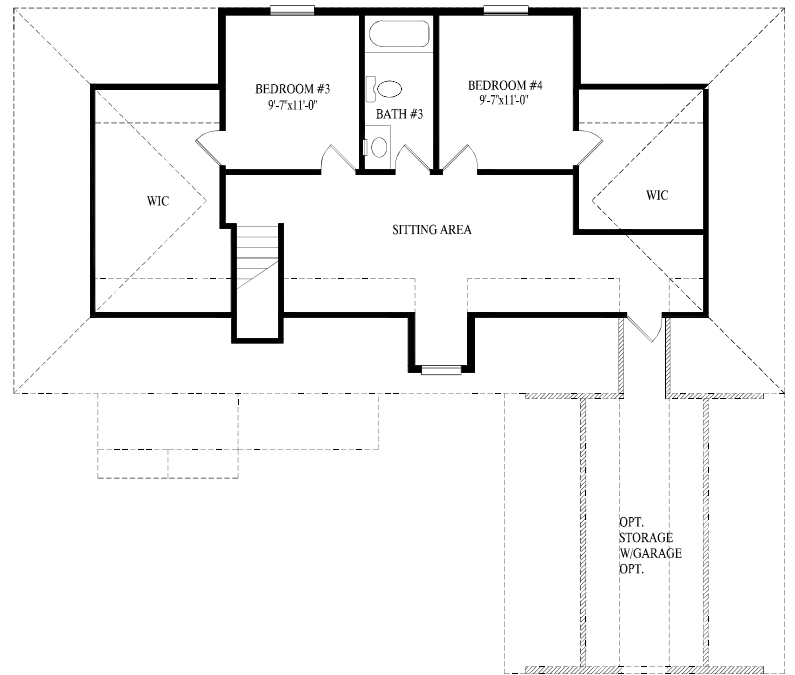
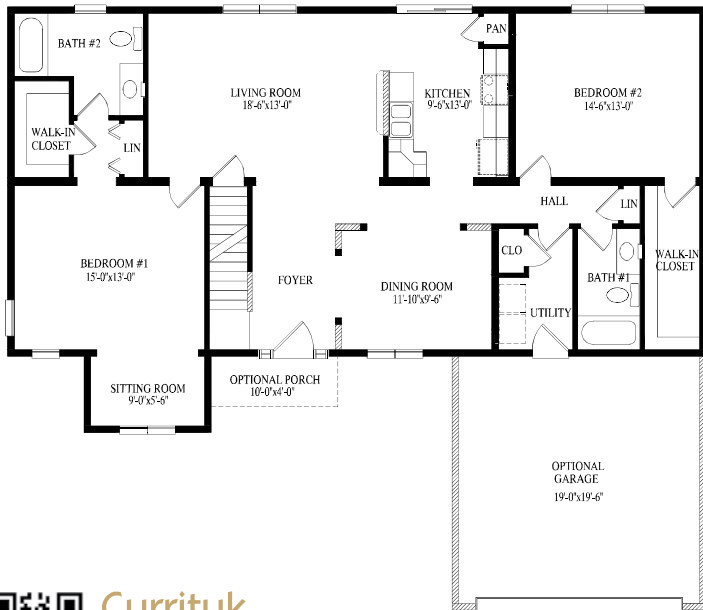
### Cameron IV

27' 6" x 48' 60" Cape  
 1485 sq. ft. first floor  
 Also available in 26' 4" & 31' 6" wide



Proposed Second Floor – 1137 sq. ft.





## Currituk

27' 6" x 55' Cape

1573 sq. ft. first floor

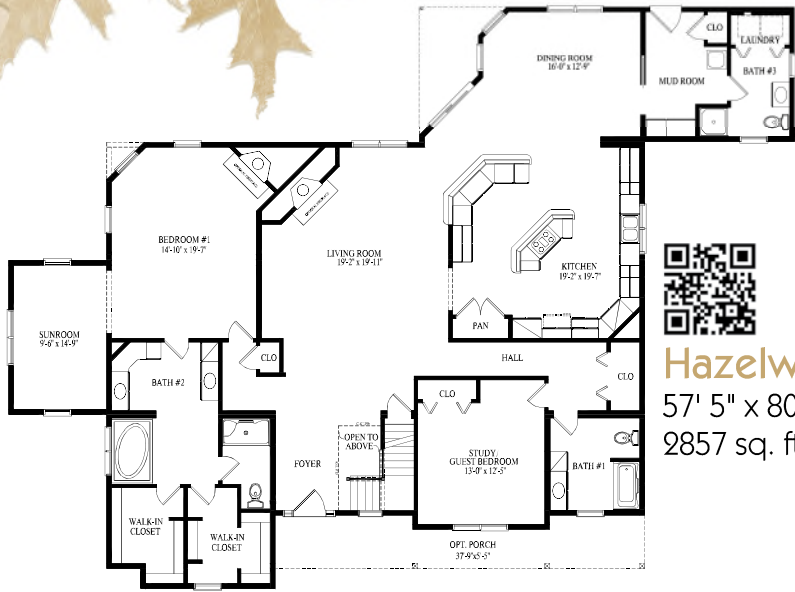
1973 sq. ft. w/ garage option

Also available in 26' 4" & 31' 6" wide

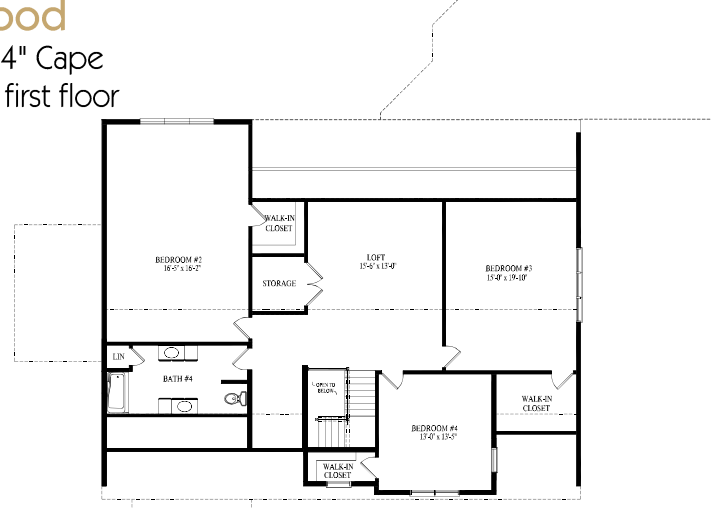
Proposed Second Floor – 900 sq. ft.  
w/garage option – 1103 sq. ft.

# CURRITUK

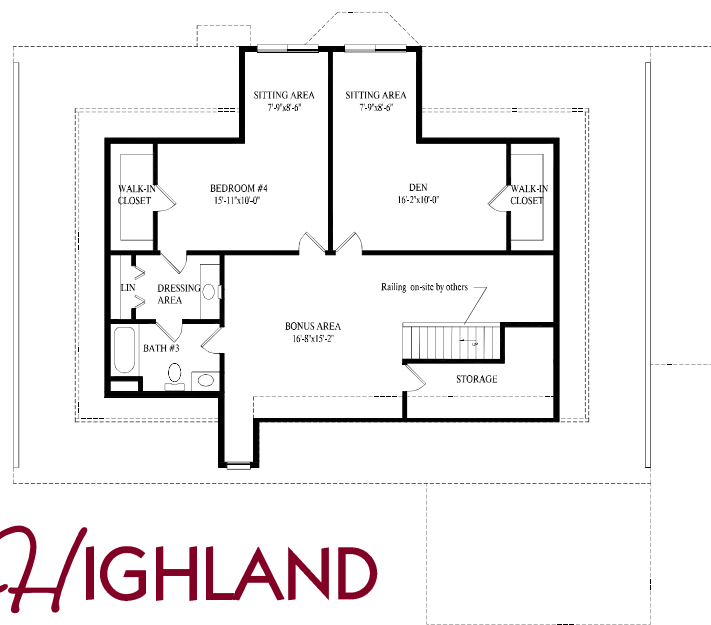
# HAZELWOOD



**Hazelwood**  
57' 5" x 80' 4" Cape  
2857 sq. ft. first floor



Proposed Second Floor – 1837 sq. ft.



Proposed Second Floor – 1246 sq. ft.

# HIGHLAND



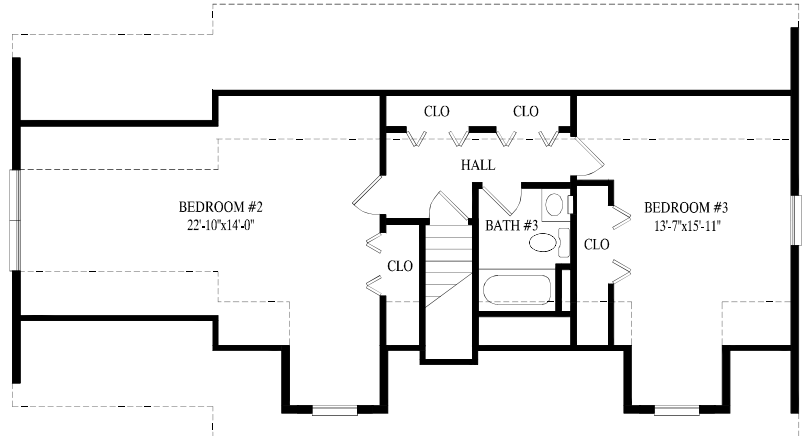
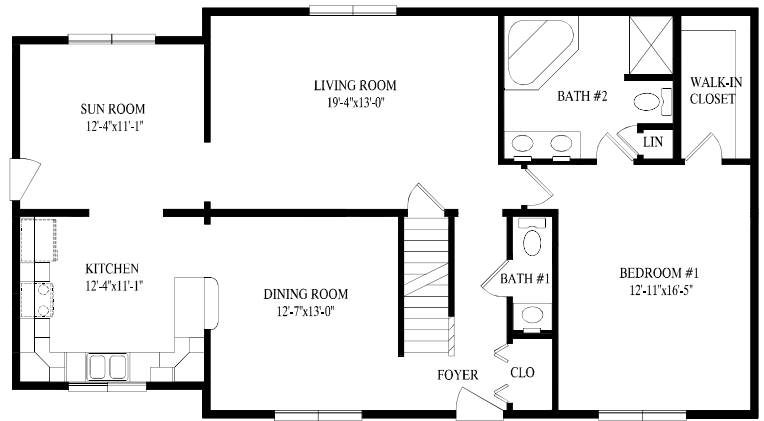
**Highland**  
56' 11" x 65' Cape  
2351 sq. ft. first floor  
2837 sq. ft. w/garage option



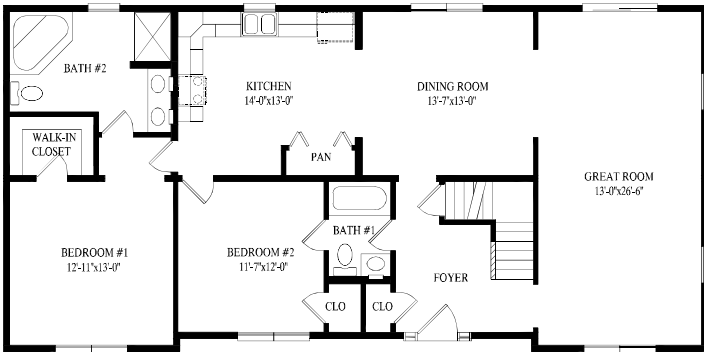
## Kittery

27' 6" x 50' Cape  
1326 sq. ft. first floor

# KITTERY

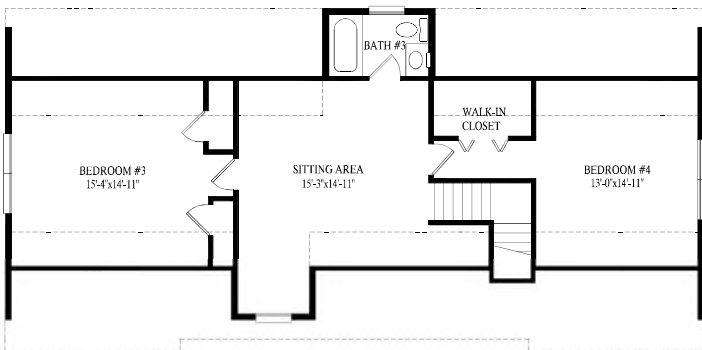


Proposed Second Floor – 836 sq. ft.



## Nantucket

27' 6" x 56' Cape  
1512 sq. ft. first floor



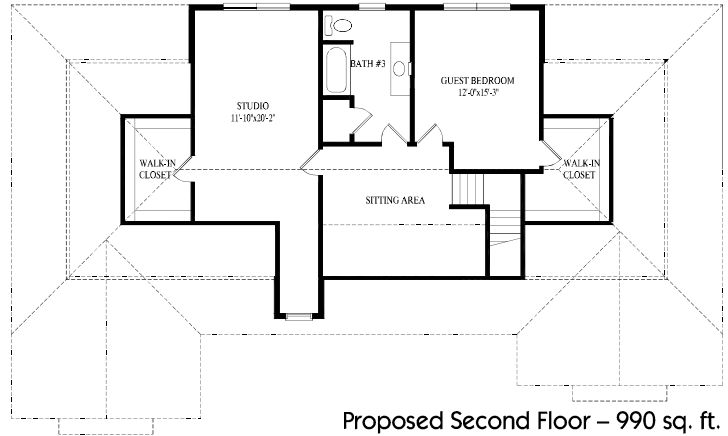
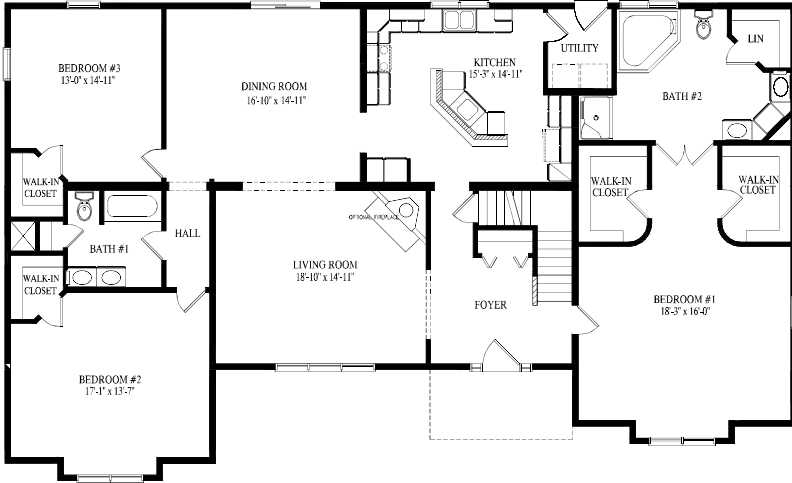
Proposed Second Floor – 952 sq. ft.



# NANTUCKET

# RICHMOND

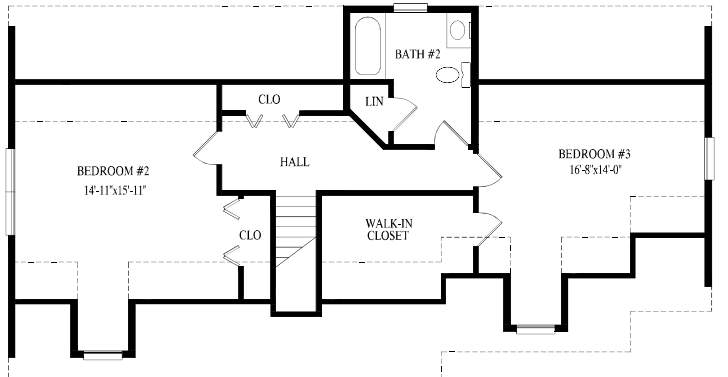
**Richmond**  
 31' 6" x 68' Cape  
 2408 sq. ft. first floor  
 Also available in 26' 4" & 31' 6" wide



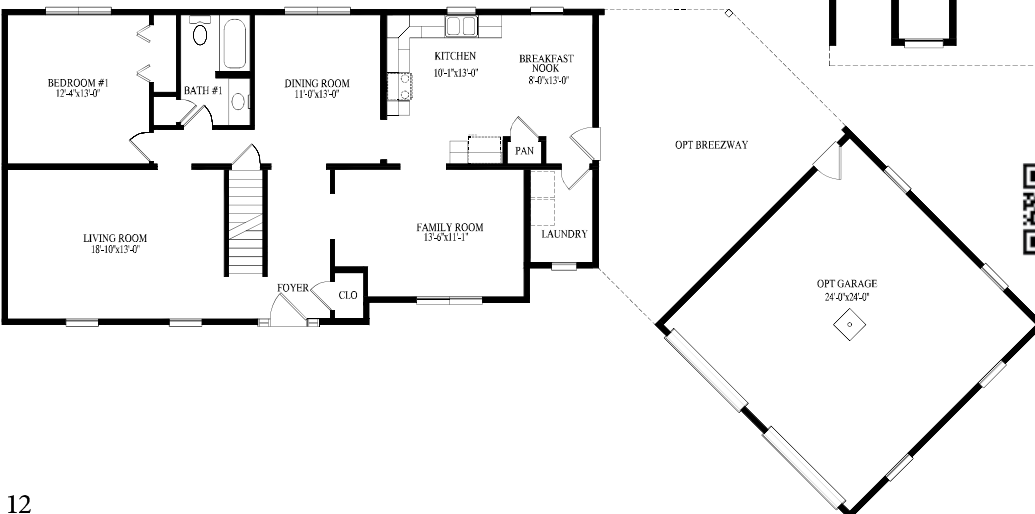
Proposed Second Floor – 990 sq. ft.



# ROCKPORT



Proposed Second Floor – 903 sq. ft.



**Rockport**  
 27' 6" x 52' Cape  
 1374 sq. ft. first floor  
 Also available in 26' 4" & 31' 6" wide

# Popular Exterior Options...



Dormers



Barrel Porch



Double Reverse Gable with Porch Extension



Bump Out or Window Seat with Shed Style Roof



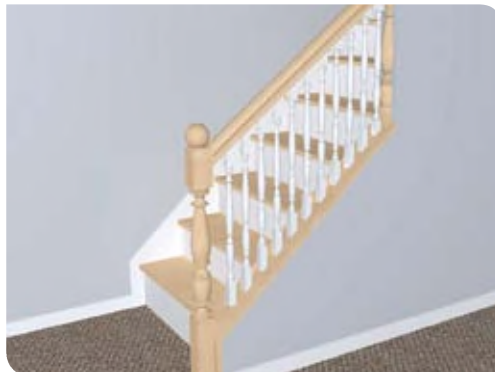
Full Length Decorative Shingle Return



Reverse Gable Porch Extension



Wrap Around Porch with Single Module Extension



36" High Sloped Railing



36" High Sloped Wall

## Great Homes Start With Quality Products...



NOTE: All renderings are artist's concepts only and may vary from actual home.



Supreme Modular  
3040 White Horse Pike  
Hammonton, NJ 08037  
[www.suprememodular.com](http://www.suprememodular.com)

Supreme Modular  
3040 White Horse Pike  
Hammonton, NJ 08037  
[www.suprememodular.com](http://www.suprememodular.com)  
856-652-2382

