

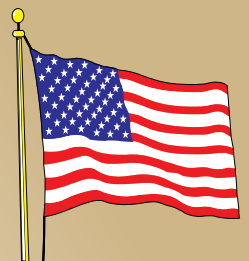


# Building AMERICA'S Future... Today!



Supreme Modular  
3040 White Horse Pike  
Hammonton, NJ 08037

## Ranch



Made in USA

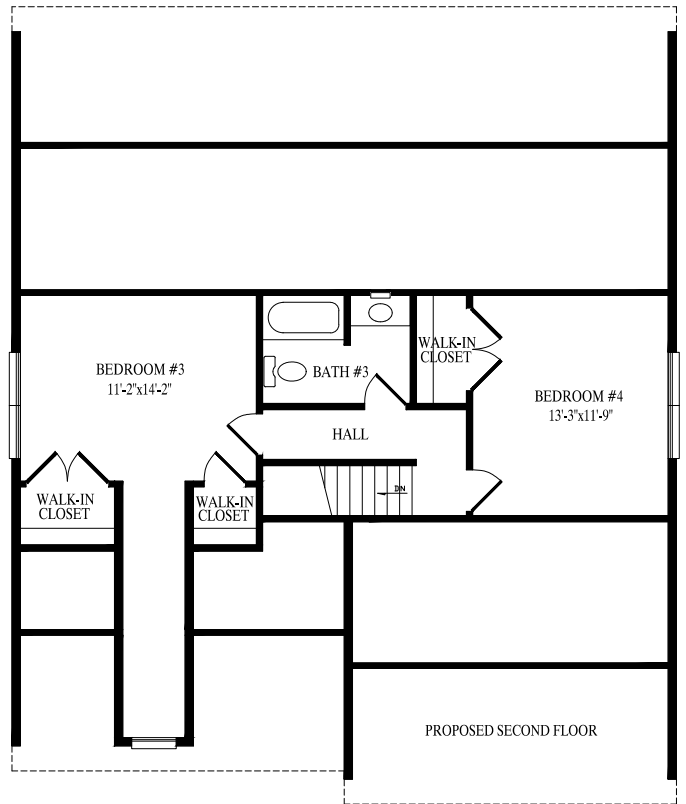
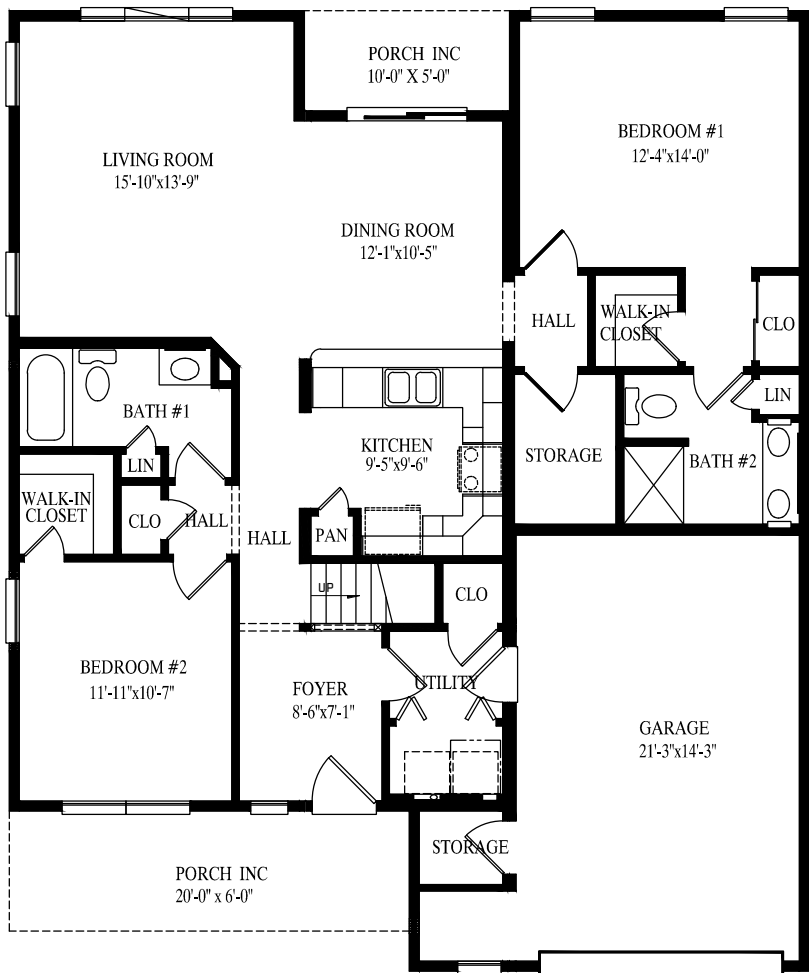
# HEMLOCK HILL



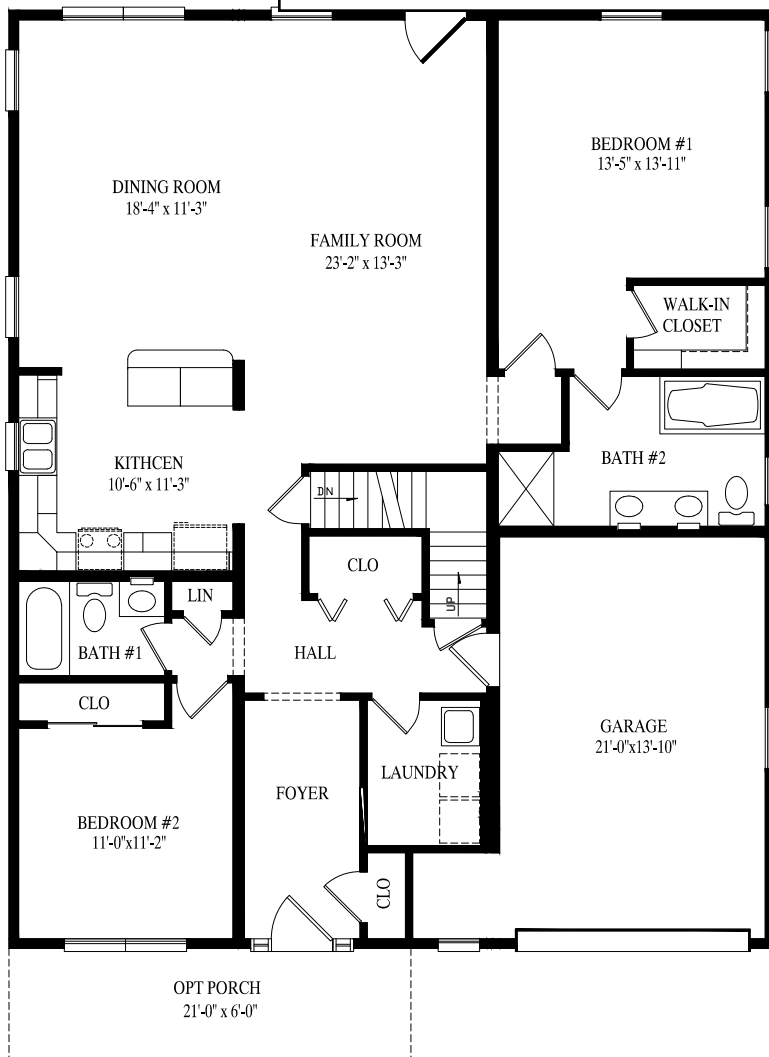
Any/all options/upgrades shown on plans, including and without limitation to appliances, bookcases, additional shelving, basement stairs, decks, porches, dormers, interior upgrades, flooring, tile work, bath upgrades, door/window upgrades, exterior upgrades, etc, are not included in price. All plans subject to engineering review and changes may be required to be made per engineering.



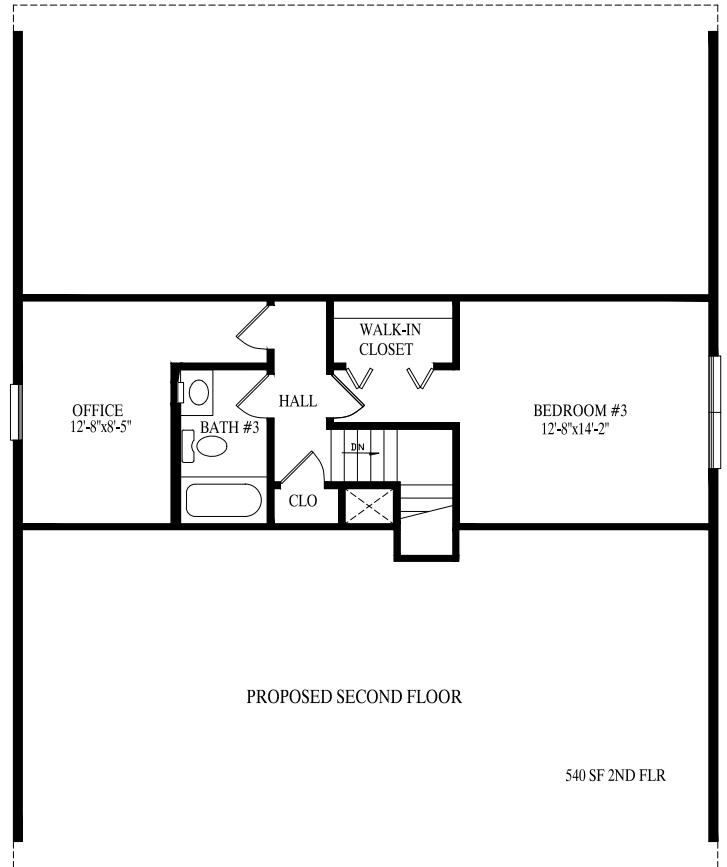
40' Ranch  
sq. ft. first floor  
sq. ft. first & second floors



Any/all options/upgrades shown on plans, including and without limitation to appliances, bookcases, additional shelving, basement stairs, decks, porches, dormers, interior upgrades, flooring, tile work, bath upgrades, door/window upgrades, exterior upgrades, etc. are not included in price. All plans subject to engineering review and changes may be required to be made per engineering.

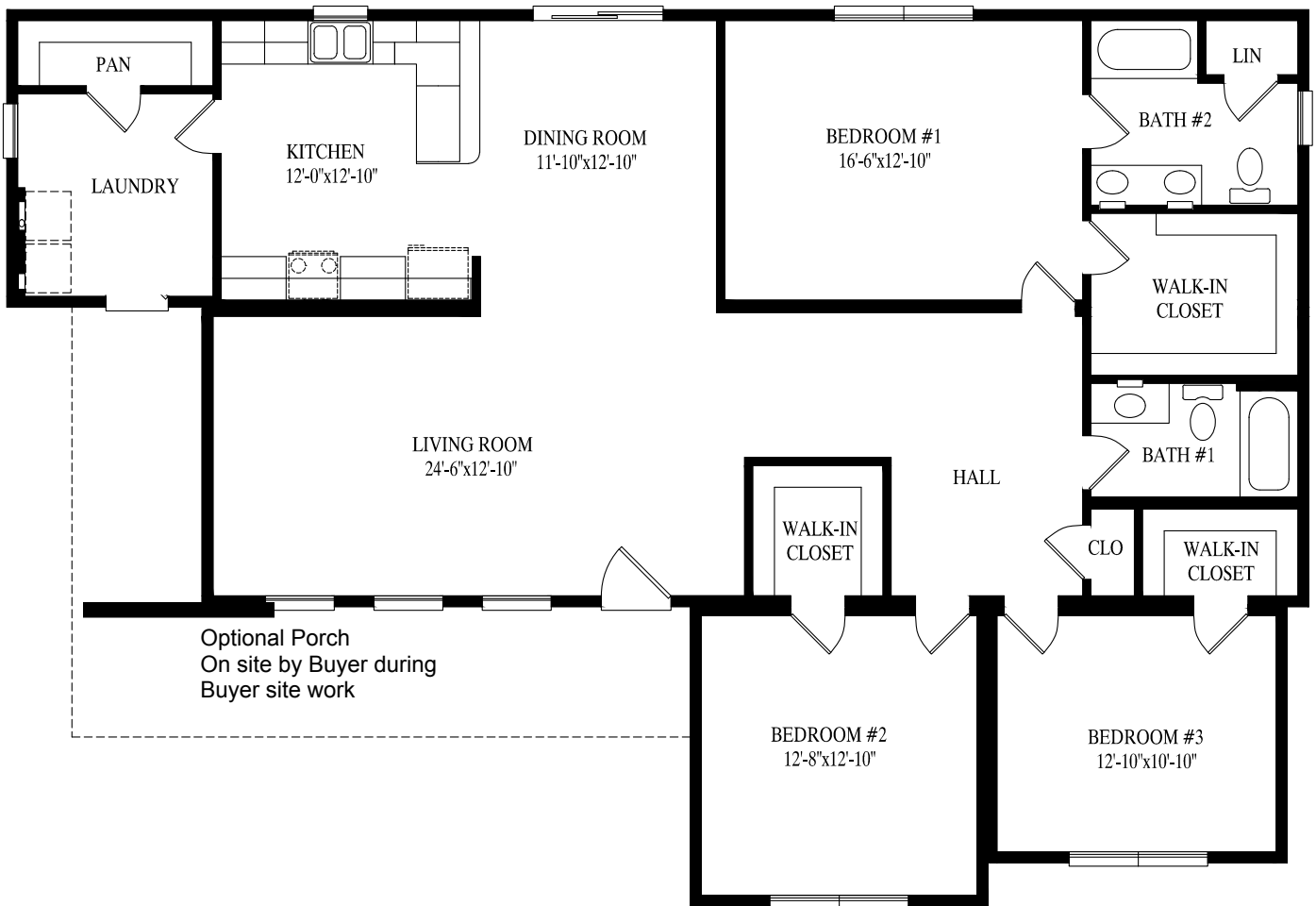


1020 living sq. ft. first floor  
 1960 total sq. ft. first floor  
 2168 total living sq. ft. first & second floors  
 2500 total sq. ft. first & second floors



PEBBLE CREEK

41' 4" x 60' Ranch  
1870 sq. ft.



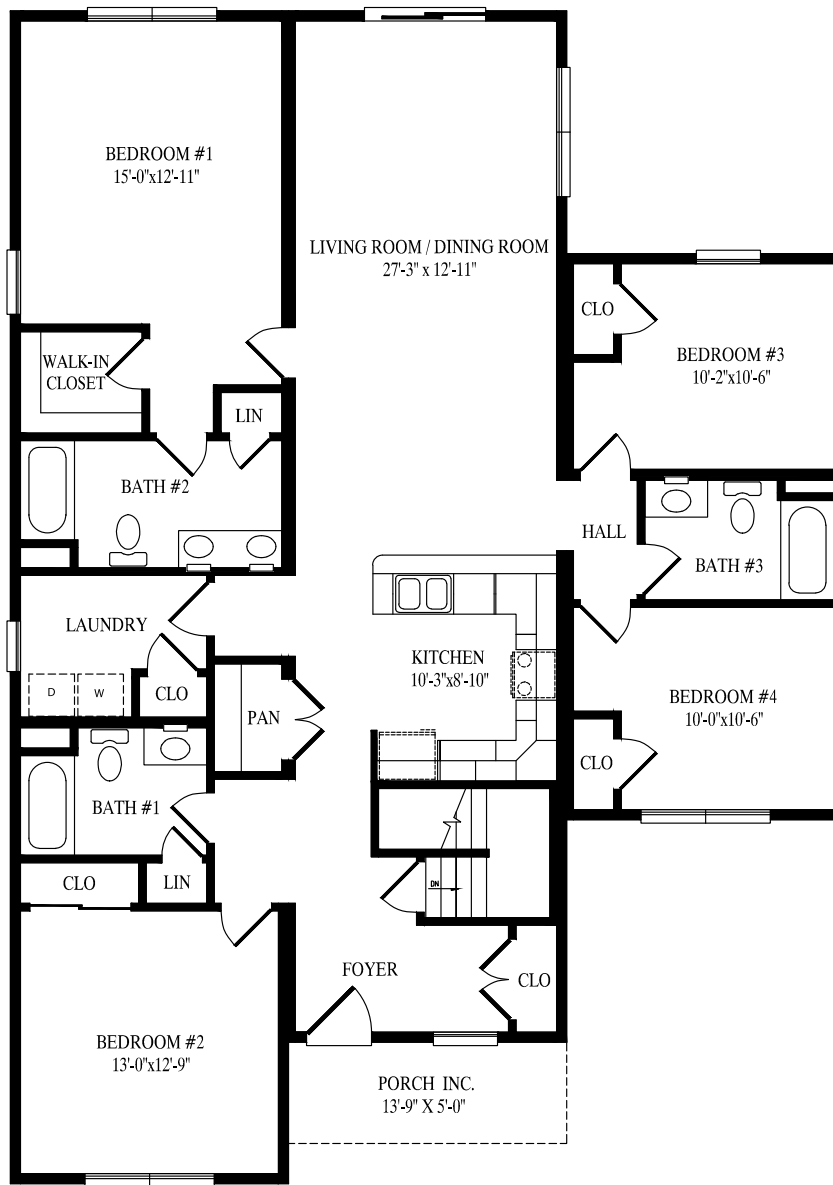
Any/all options/upgrades shown on plans, including and without limitation to appliances, bookcases, additional shelving, basement stairs, decks, porches, dormers, interior upgrades, flooring, tile work, bath upgrades, door/window upgrades, exterior upgrades, etc, are not included in price. All plans subject to engineering review and changes may be required to be made per engineering.



BOONES CREEK

58' x 41' Ranch  
1885 sq. ft.

Any/all options/upgrades shown on plans, including and without limitation to appliances, bookcases, additional shelving, basement stairs, decks, porches, dormers, interior upgrades, flooring, tile work, bath upgrades, door/window upgrades, exterior upgrades, etc, are not included in price. All plans subject to engineering review and changes may be required to be made per engineering.



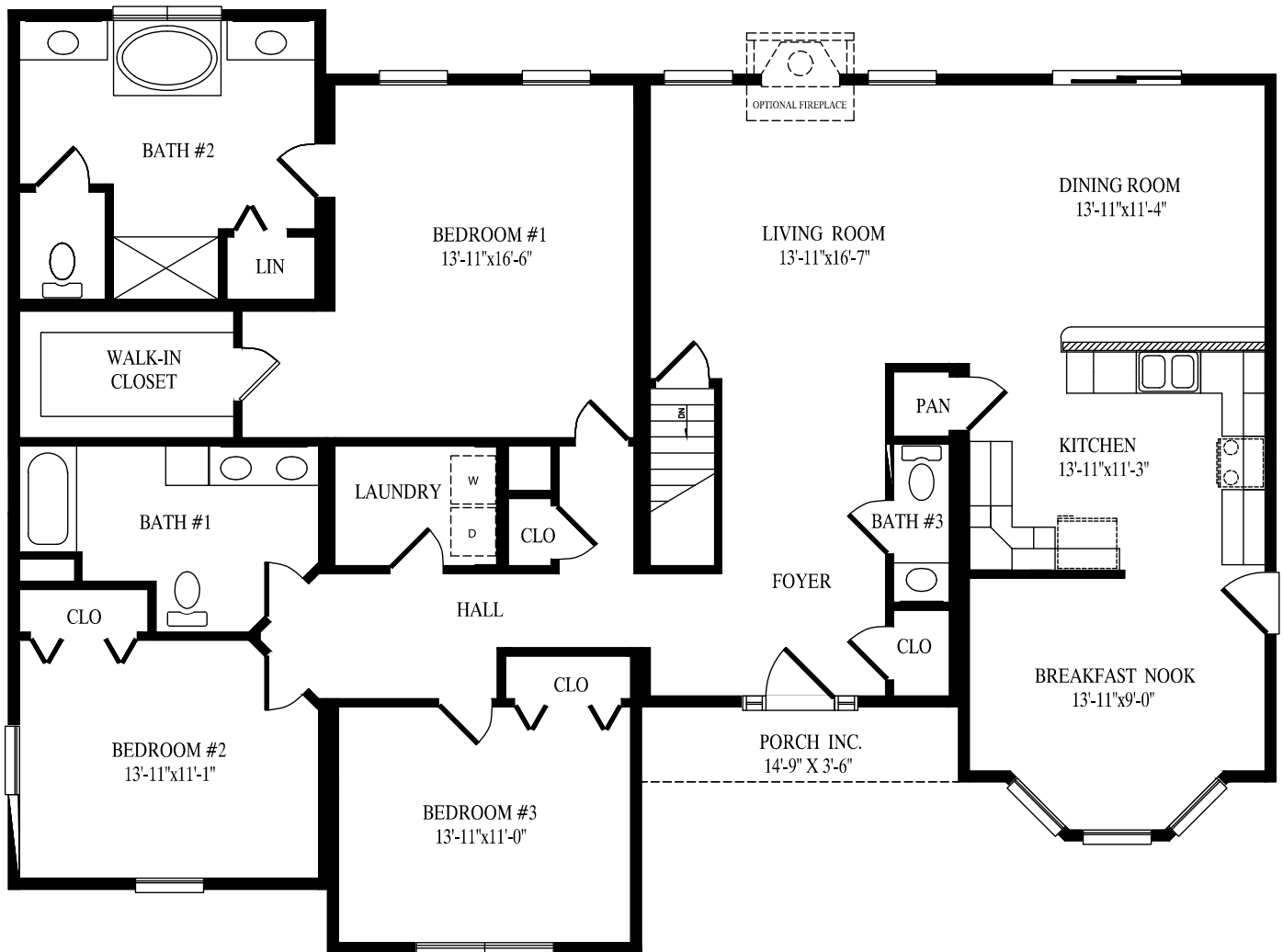
CRYSTAL CREEK

# SOUTH HILL



Any/all options/upgrades shown on plans, including and without limitation to appliances, bookcases, additional shelving, basement stairs, decks, porches, dormers, interior upgrades, flooring, tile work, bath upgrades, door/window upgrades, exterior upgrades, etc., are not included in price. All plans subject to engineering review and changes may be required to be made per engineering. \*\*\*Room sizes shown may be different than actual construction room sizes as these floor plans are informal and are for information purposes only. Roof crickets supplied and installed by Buyer as part of Buyer site work. Options shown are not included and are not guaranteed to be sold by Supreme Modular as said options may be done by Buyer during Buyer site work.

44' x 59' 1" Ranch  
2155 sq. ft.



# Popular Exterior Options...



Single Unit Extension



Bump Out



Reverse Gable



Reverse Gable w/Extension



Dormers



Set Back



Decorative Shingle Return



Shed Dormer



Porch Roof

Great Homes Start With Quality Products...



NOTE: All renderings are artist's concepts only and may vary from actual home.



Supreme Modular  
3040 White Horse Pike  
Hammonton, NJ 08037  
[www.suprememodular.com](http://www.suprememodular.com)

Supreme Modular  
3040 White Horse Pike  
Hammonton, NJ 08037  
[www.suprememodular.com](http://www.suprememodular.com)  
856-652-2382

